



# BL

Bone Level Implants





 **TBR<sup>®</sup>**

Unique, like your smile —

# CONTENTS

<b>INTRODUCTION</b>	<b>P 4</b>
<b>OCTAGONAL CONNECTION IMPLANTS</b>	<b>P 11</b>
INFINITY IMPLANTS	P 12
CONNECT IMPLANTS	P 14
SURGERY AND MANAGEMENT OF GINGIVAL TISSUES	P 16
IMPRESSION TAKING STAGE	P 18
PROSTHETIC SOLUTIONS	P 20
FIXED CEMENTED PROSTHESIS SOLUTIONS	P 22
FIXED SCREW-RETAINED PROSTHESIS SOLUTIONS	P 26
STABILISATION OF REMOVABLE PROSTHESIS SOLUTIONS	P 28
<b>MORSE TAPER CONNECTION IMPLANTS</b>	<b>P 31</b>
M IMPLANTS	P 32
SURGERY AND MANAGEMENT OF GINGIVAL TISSUES	P 34
IMPRESSION TAKING STAGE	P 36
PROSTHETIC SOLUTIONS	P 38
FIXED CEMENTED PROSTHESIS SOLUTIONS	P 40
FIXED SCREW-RETAINED PROSTHESIS SOLUTIONS	P 42
STABILISATION OF REMOVABLE PROSTHESIS SOLUTIONS	P 44
<b>SHORT IMPLANTS</b>	<b>P 47</b>
BABY M AND BABY 8 IMPLANTS	P 48
<b>INSTRUMENTATION &amp; ACCESSORIES</b>	<b>P 51</b>

## AN IMPLANT SOLUTION...

The choice of implant technique, specific to each user, must **match the clinical situation requiring treatment.**



This is why TBR provides different implant ranges that not only **facilitate the daily practice of implantology**, but also - and above all - **satisfy the periodontal requirements.**



TISSUE LEVEL



BONE LEVEL



# ... FOR EVERY PATIENT.

## 1 STAGE IMPLANTS - SOFT TISSUE LEVEL

The Zirconia Y-TZP collar technology has proven to be a real aesthetic anti-bacterial shield.

## 2 STAGE IMPLANTS - BONE LEVEL

The perfect implant/abutment fit with Platform Switching releases a new biological space for better tissue stability.

## MORSE TAPER CONNECTION IMPLANTS

A 4° double Morse taper implies proven precision and imperviousness.

## IMPLANTS WITH INTERNAL OCTAGONAL CONNECTION

A flat 8-sided connection provides total freedom for your prosthetic restorations.

## SHORT IMPLANTS [BABY]

Implant length of 6 mm to avoid sinus lift surgery or bone filling.

## BABY IMPLANTS



# A PROSTHETIC SOLUTION...

**1<sup>st</sup> step of the implant treatment**, the design of the prosthetic project will provide the specifications for the implant rehabilitation.

The aim is to **restore a function and obtain an aesthetic result** compatible with the patient's expectations.

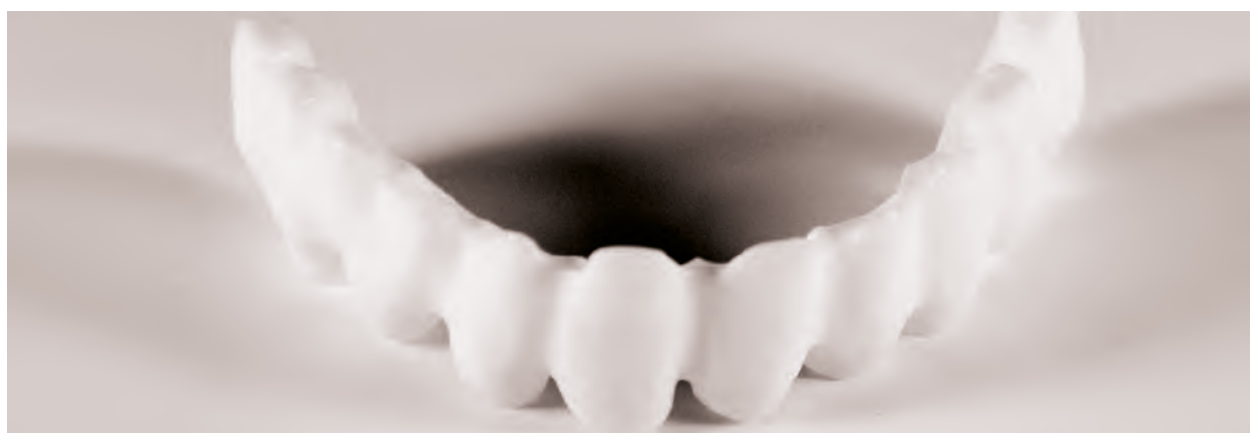
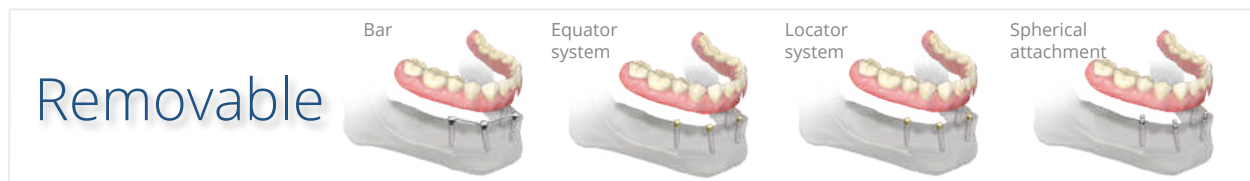
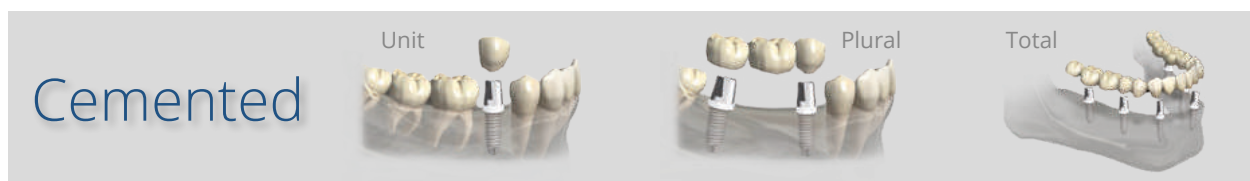
Communication between the different parties involved in the treatment (**practitioner, prosthesis laboratory, agent**) is essential to achieve the desired objective.

Which type of prosthesis to choose for the restoration?

Whatever your choice, whatever the case to be treated, TBR offers **a fully comprehensive range of prosthetic components**.



...FOR EVERY PATIENT.



## SOME GUIDELINES...

### Make surgery and prostheses easier!

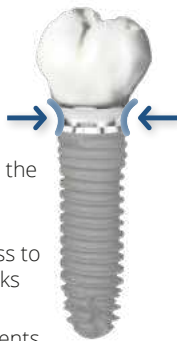
TBR implant and prosthetic systems have a multitude of benefits and tools to simplify your daily practice.

#### Platform switching

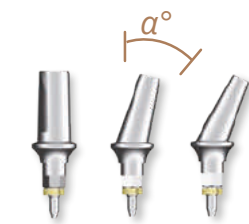


##### Benefits

- Gingival ring-shaped sleeve around the implant
- Absolute imperviousness to bacterial attacks
- Reduction of micro-movements and inflammatory infiltration on the peri-implant crestal bone
- Long-lasting aesthetics, bone tissue stability and soft tissue preservation



#### Angulation kit



##### Tips for use

The angulation kit makes it easy to select the appropriate angulation for the clinical case requiring treatment.

#### Shoulder height selector



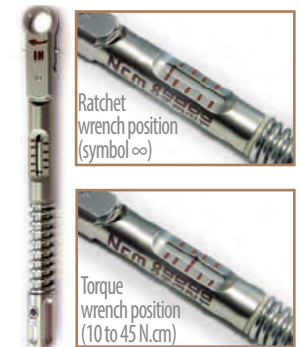
##### Tips for use

The shoulder height selector measures the available gingiva.

#### Torque wrench



##### Dual function

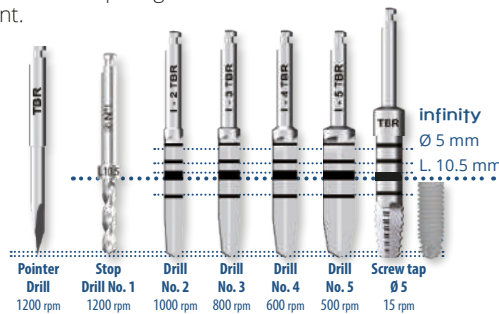


#### Drilling sequence



##### Tips for use

The TBR implants are placed in the bone following a unique and simple drilling protocol.



## Implant platform & Universal colour code

To make it easier to identify the right components to use, all our systems are colour-coded.

The reference of this code is the **diameter of the implant platform**, each platform thus having its own colour.



		2 BONE LEVEL IMPLANTS	
MORSE TAPER CONNECTION IMPLANTS	Ø3.2	Green	
	Ø3.9	Grey	
	Ø4.7	Blue	
OCTAGONAL CONNECTION IMPLANTS	Ø3.5	Green	
	Ø4	Grey	
	Ø5	Blue	

The temporary titanium prosthetic component families follow this colour code:

- Healing screws

- Cover screws

- Impression transfers

- Analogues





# ... FOR BETTER ORIENTATION.

## Packaging and text

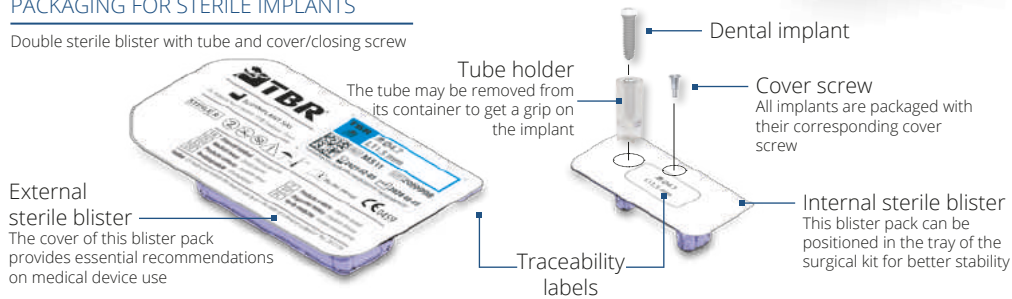
Each product is checked and packaged individually, in an ultra-clean environment. You and all TBR users expect your manufacturer to provide a product with **guaranteed origin and quality**. All our products, sterile or non-sterile, carry the CE mark and therefore meet the regulatory requirements associated with all medical devices.



## Implant

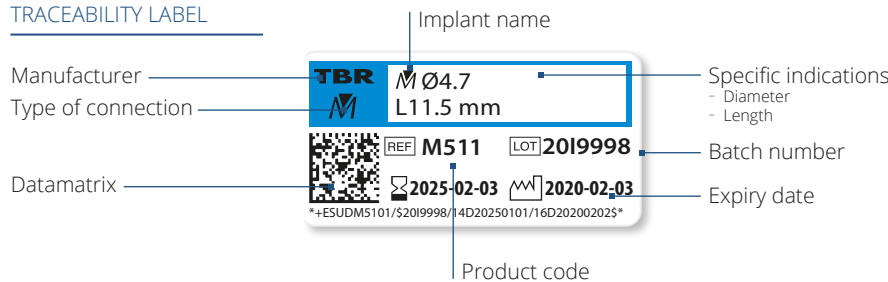
### PACKAGING FOR STERILE IMPLANTS

Double sterile blister with tube and cover/closing screw



Packaging containing 4 detachable and repositionable traceability labels

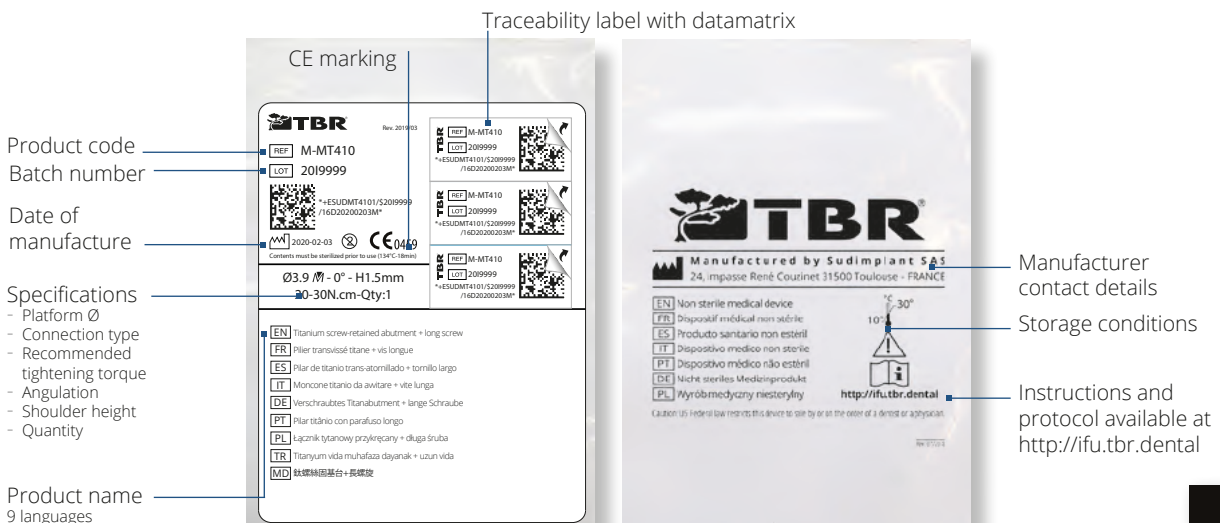
### TRACEABILITY LABEL

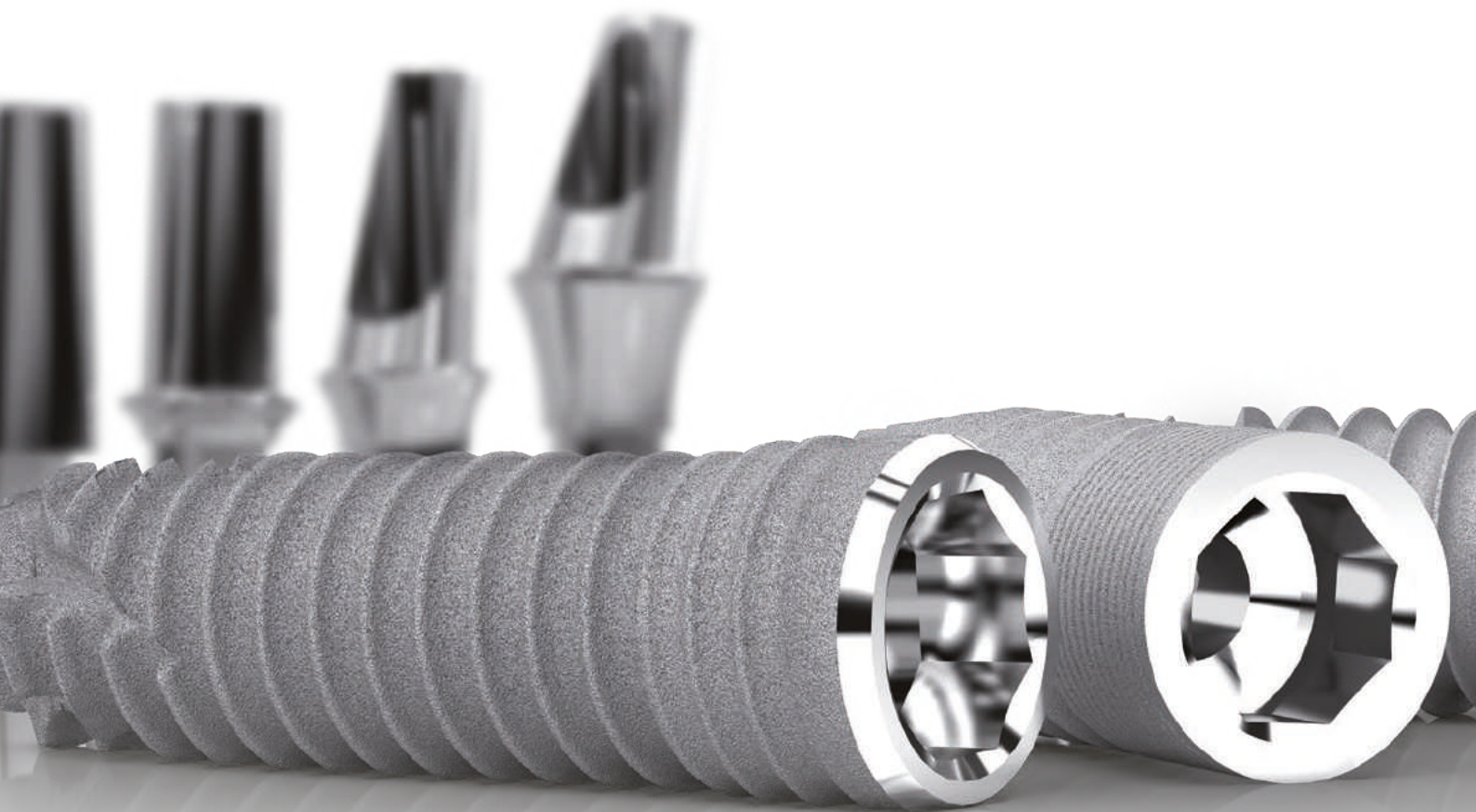


## Prosthesis

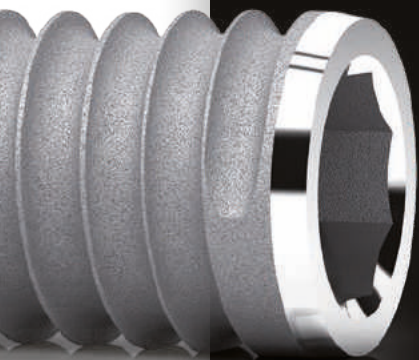
### PACKAGING FOR NON-STERILE PROSTHETIC COMPONENTS

Individual sachet with 3 detachable and repositionable labels





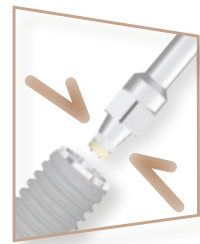
Implant systems with  
**8 Connection**  
Flat friction &  
Internal octagon



# infinity

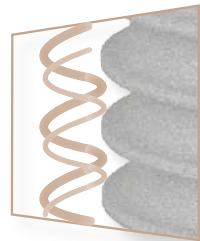
## SWISSCLIP TECHNOLOGY

- Clipping system between the implant and the screw tools for contra-angle or for torque wrench
- Gripping and direct positioning of the implant without digital contact
- Real time-saving and high accuracy
- Available for direct technique transfers and for the angulation kit



## ASYNCHRONOUS DUAL SCREW THREAD

- Self-tapping rounded macrothreads
- Prevention of cortical bone compression phenomena
- Optimal primary stability



## MATERIALS

- **Grade 4 Titanium:** T60 commercially pure Grade 4 T60 commercially pure titanium meets the requirements of ISO 5832-2 and the American Society for Testing and Materials (ASTM F67 3.7065)



## 2

### 2 STAGE IMPLANTS - BONE LEVEL

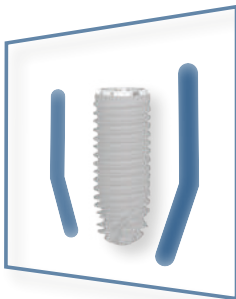
The perfect implant/abutment fit with Platform Switching releases a new biological space for better tissue stability.

#### PLATFORM SWITCHING



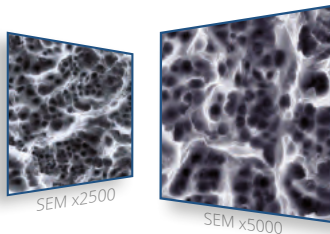
- Gingival ring-shaped sleeve around the implant
- Absolute imperviousness to bacterial attacks
- Reduction of micro-movements and inflammatory infiltration on the peri-implant crestal bone
- Long-lasting aesthetics, bone tissue stability and soft tissue preservation

#### CCS BIOSHAPE



- Conical cruciform apex with a wide thread diameter
- Cylindrical body to maintain close bone contact
- Spherical collar with a bevelled top to limit bone stress and preserve the crestal bone
- Optimal primary stability and insertion safety

#### SURFACE TREATMENT



The implants incorporate a sandblasting and hydrofluoric acid-etching surface treatment that promotes the osseointegration process.

#### ATRAUMATIC APEX

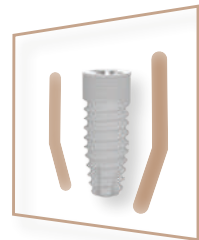


- Apex with atraumatic convexity
- Ideal for sinus lifts
- Self-tapping claw

# Connect

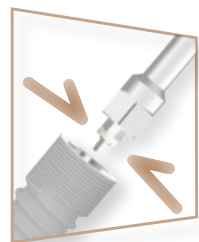
## CC BIOSHAPE

- Self-tapping conical cruciform apex
- Cylindrical body to maintain close bone contact
- Optimal primary stability and insertion safety



## SWISSCLIP TECHNOLOGY

- Clipping system between the implant and the screw tools for contra-angle or for torque wrench
- Gripping and direct positioning of the implant without digital contact
- Real time-saving and high accuracy
- Available for direct technique transfers and for the angulation kit



## MATERIALS

- **Grade 4 Titanium:** T60 commercially pure  
Grade 4 T60 commercially pure titanium meets the requirements of ISO 5832-2 and the American Society for Testing and Materials (ASTM F67 3.7065)



## 2

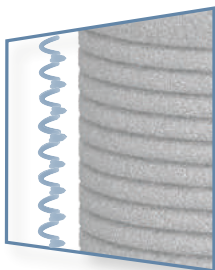
### 2 STAGE IMPLANTS - BONE LEVEL

The perfect implant/abutment fit with Platform Switching releases a new biological space for better tissue stability.



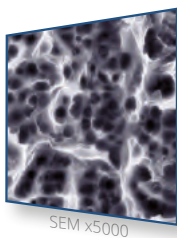
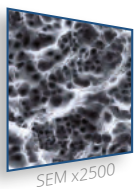
#### PLATFORM SWITCHING

- Gingival ring-shaped sleeve around the implant
- Absolute imperviousness to bacterial attacks
- Reduction of micro-movements and inflammatory infiltration on the peri-implant crestal bone
- Long-lasting aesthetics, bone tissue stability and soft tissue preservation



#### MICROTHREADED COLLAR

- Limits the effects of micro-movements
- Drastically reduces inflammatory infiltration on the peri-implant crestal bone, and preserves the vertical integrity of the bone ridge
- Improved vascularisation of the area, thus protecting the peri-implant periodontal tissue



#### SURFACE TREATMENT

The implants incorporate a **sandblasting and hydrofluoric acid-etching** surface treatment that promotes the osseointegration process.

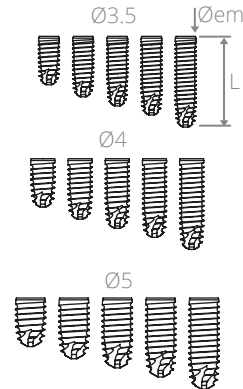


#### ATRAUMATIC APEX

- Apex with atraumatic convexity
- Ideal for sinus lifts
- Self-tapping claw

## Dental implant range 8 - Family: infinity

Diameter (mm) \ Length (mm)	Platform Ø3.5 mm	Platform Ø4 mm	Platform Ø5 mm	Preview
8 mm	I308	I408	I508	
10.5 mm	I310	I410	I510	
11.5 mm	I311	I411	I511	
13 mm	I313	I413	I513	
15.5 mm	I315	I415	I515	

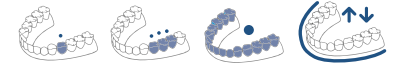


**Technical pattern**  
 Øem: Emergence diameter  
 L: Length

Setting  
 45 N.cm

Delivered with a cover screw

**Indication**

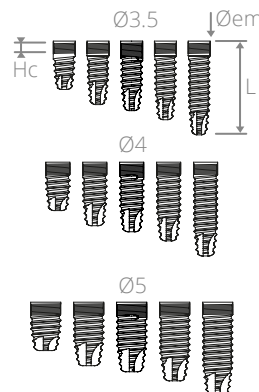


**Colour code**

● Ø3.5 ● Ø4 ● Ø5

## Dental implant range 8 - Family: Connect

Diameter (mm) \ Length (mm)	Platform Ø3.5 mm	Platform Ø4 mm	Platform Ø5 mm	Preview
8 mm	X308	X408	X508	
10.5 mm	X310	X410	X510	
11.5 mm	X311	X411	X511	
13 mm	X313	X413	X513	
15.5 mm	X315	X415	X515	

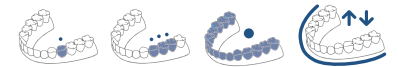


**Technical pattern**  
 Øem: Emergence diameter  
 Hc: Height of microthreaded collar 2 mm  
 L: Length

Setting  
 45 N.cm

Delivered with a cover screw

**Indication**



**Colour code**

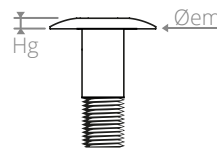
● Ø3.5 ● Ø4 ● Ø5





■ Cover screw

Ø implant	Øem (mm)	Hg (mm)	Product code	Preview
Ø3.5	Ø3.5	0.5	O-VIO350	
Ø4	Ø4		O-VIO400	
Ø5	Ø5		O-VIO500	



Technical pattern  
Øem: Emergence diameter

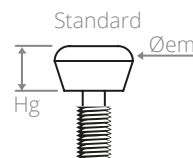


Colour code

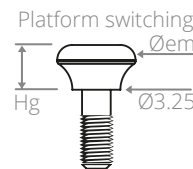
- Ø3.5
- Ø4
- Ø5

■ Standard and platform switching healing screws

Ø implant	Øem (mm)	Profile	Hg (mm)	Product code	Preview
Ø3.5	Ø4.55	ST	3	HO-VT330	
			5	HO-VT350	
			7	HO-VT370	
		PS	3	HO-VTS330	
			5	HO-VTS350	
			7	HO-VTS370	
Ø4	Ø5.3	ST	3	HO-VT430	
			5	HO-VT450	
			7	HO-VT470	
		PS	3	HO-VTS430	
			5	HO-VTS450	
			7	HO-VTS470	
Ø5	Ø6.3	ST	3	HO-VT530	
			5	HO-VT550	
			7	HO-VT570	
		PS	3	HO-VTS530	
			5	HO-VTS550	
			7	HO-VTS570	



Technical pattern  
Øem: Emergence diameter  
Hg: Gingival height  
ST: Standard profile  
PS: Platform switching profile



Colour code

- Ø3.5
- Ø4
- Ø5



Tips for use

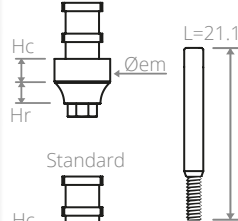
The platform switching healing screw is used to prepare soft tissues to receive a platform switching abutment.

# COMPONENTS FOR THE IMPRESSION-TAKING AND MASTER CAST-MAKING

## ■ Impression Transfer - Direct Technique "Pick-up"

Ø implant	Øem (mm)	Hr (mm)	Hc (mm)	Profile	Product code	Preview
Ø3.5	Ø4.25			Standard	O-TD300	
				PS	O-TDS300	
Ø4	Ø5	2	2	Standard	O-TD400	
				PS	O-TDS400	
Ø5	Ø6			Standard	O-TD500	
				PS	O-TDS500	

Platform switching



Technical pattern

Hc: Cylindrical height  
Øem: Emergence diameter  
Hr: Radial height  
PS: Platform switching

Manual screwing  
Delivered with a screw Ref. VTD185

Indication

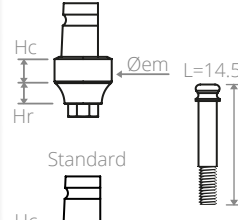
Colour code

● Ø3.5 ● Ø4 ● Ø5

## ■ Impression Transfer - Indirect Technique "Pop-in"

Ø implant	Øem (mm)	Hr (mm)	Hc (mm)	Profile	Product code	Preview
Ø3.5	Ø4.25			Standard	O-TI300	
				PS	O-TIS300	
Ø4	Ø5	2	2	Standard	O-TI400	
				PS	O-TIS400	
Ø5	Ø6			Standard	O-TI500	
				PS	O-TIS500	

Platform switching



Technical pattern

Hc: Cylindrical height  
Øem: Emergence diameter  
Hr: Radial height  
PS: Platform switching

Manual screwing  
Delivered with a screw Ref. VTI155

Indication

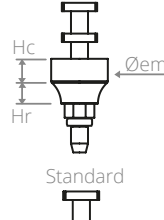
Colour code

● Ø3.5 ● Ø4 ● Ø5

## ■ Impression Transfer - Direct Technique "SwissClip"

Ø implant	Øem (mm)	Hr (mm)	Hc (mm)	Profile	Product code	Preview
Ø3.5	Ø4.25			Standard	O-TDC300	
				PS	O-TDCS300	
Ø4	Ø5	2	2	Standard	O-TDC400	
				PS	O-TDCS400	
Ø5	Ø6			Standard	O-TDC500	
				PS	O-TDCS500	

Platform switching



Technical pattern

Hc: Cylindrical height  
Øem: Emergence diameter

Hr: Radial height  
PS: Platform switching

Indication

Colour code

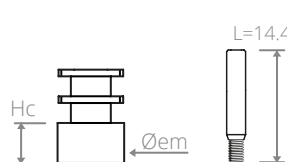
● Ø3.5 ● Ø4 ● Ø5

Tips for use

Optimal use when the implant axis is straight.

## ■ Impression Transfer - Direct Technique for Multi-Unit Abutment

Ø implant	Øem (mm)	Hc (mm)	Product code	Preview
Ø3.5	Ø4.25	3	HO-TDP300	
Ø4	Ø5		TDP400	
Ø5	Ø6		TDP500	



Technical pattern

Hc: Cylindrical height  
Øem: Emergence diameter

Manual screwing  
Delivered with a screw Ref. VTD098

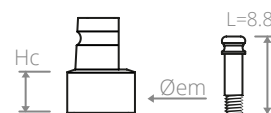
Indication

Colour code

● Ø3.5 ● Ø4 ● Ø5

## ■ Impression Transfer - Indirect Technique for Multi-Unit Abutment

Ø implant	Øem (mm)	Hc (mm)	Product code	Preview
Ø3.5	Ø4.25	3	HO-TIP300	
Ø4	Ø5		TIP400	
Ø5	Ø6		TIP500	



Technical pattern

Hc: Cylindrical height  
Øem: Emergence diameter

Manual screwing  
Delivered with a screw Ref. VTI088

Indication

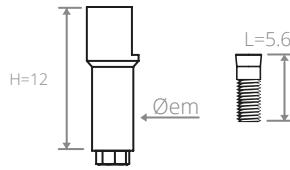
Colour code

● Ø3.5 ● Ø4 ● Ø5



## Scanbody - Digital transfer

Ø implant	Øem (mm)	Product code	Preview
Ø3.5 Ø4 Ø5	Ø3.5	O-SCN000	



### Technical pattern

H: PEEK part height  
Øem: Emergence diameter

Manual screwing  
Delivered with a screw Ref. VIMC045

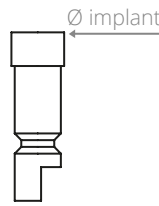
Special CAD / CAM

Indication

Tips for use For multi-unit abutment restorations, use the PEEK scanbodies sheaths provided for this purpose (P27).

## Implant analogue

Ø implant	Product code	Preview
Ø3.5	O-RL300	
Ø4	O-RL400	
Ø5	O-RL500	



### Technical pattern

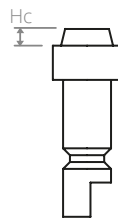
Ø implant: Implant platform diameter

Indication

Colour code ● Ø3.5 ● Ø4 ● Ø5

## Multi-unit abutment analogue

Ø implant	Hc (mm)	Product code	Preview
Ø3.5	1	HO-HPS300	
Ø4		HPS400	
Ø5		HPS500	



### Technical pattern

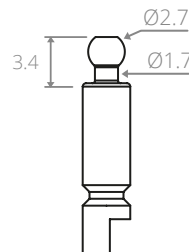
Ø implant: Implant platform diameter  
Hc: Cone height (replica of the multi-unit abutment)

Indication

Colour code ● Ø3.5 ● Ø4 ● Ø5

## Spherical attachment analogue

Ø implant	Product code	Preview
Ø3.5 Ø4 Ø5	HAS001	



### Technical pattern

Compatible with cap or O-ring retention systems

Indication

## Equator® abutment analogue

Ø implant	Product code	Preview
Ø3.5 Ø4 Ø5	HEQU000 (144AE)	

## Equator® abutment transfer

Ø implant	Product code	Preview
Ø3.5 Ø4 Ø5	TEQU200 (x2) (044CAIN)	

## Locator® abutment analogue

Ø implant	Product code	Preview
Ø3.5 Ø4	HLOC400 (8530)	
Ø5	HLOC500 (8516)	

## Locator® abutment transfer

Ø implant	Product code	Preview
Ø3.5 Ø4 Ø5	TDLOC100 (8505)	

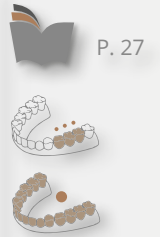
# Standard prosthetic solutions

## Cemented prosthesis

## Screw-retained prosthesis

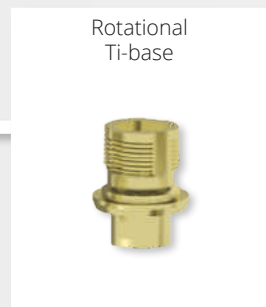
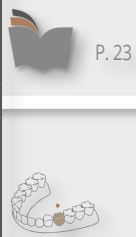
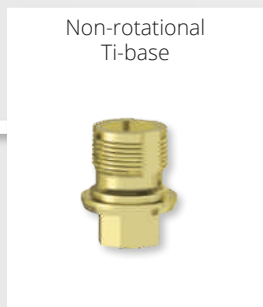
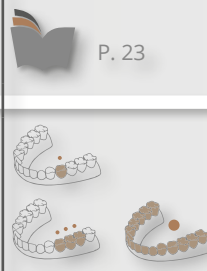


## Secondary elements



# Customised prosthetic solutions

Additional parts for CAD / CAM use





# GENERAL PROSTHETIC SYNOPSIS

## Removable prosthesis

### Secondary elements

Retention, accessories and instrumentation



Retention, accessories and instrumentation



Spherical attachment + Cap or O-ring



P. 28



Equator® abutment



P. 28



Locator® abutment



P. 28



Straight or angulated multi-unit abutment + Castable sheath



P. 27



infinity  
Connect  
Baby 8

## Caption and comments



SINGLE-UNIT FIXED RESTORATION



FULL-ARCH FIXED RESTORATION



2 STAGE IMPLANT BONE LEVEL



COMPONENT THAT CAN BE USED BY YOUR CAD / CAM SYSTEM



MULTIPLE-UNIT FIXED RESTORATION



REMOVABLE RESTORATION



REFER TO THE SPECIFIED PAGES



RECOMMENDED TIGHTENING TORQUE

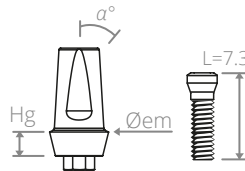


The final prosthetic components are gradually being delivered with 2 screws:  
- 1 laboratory screw,  
- 1 final screw.



## ■ PEEK temporary abutment

Ø implant	Øem (mm)	Hg (mm)	α°	Product code	Preview
Ø3.5	Ø4.25	2	0°	O-MP300	
			15°	O-MP301	
Ø4	Ø5		0°	O-MP400	
			15°	O-MP401	
Ø5	Ø6		0°	O-MP500	
			15°	O-MP501	

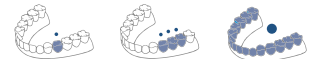


Technical pattern

Hg: Gingival height  
Øem: Emergence diameter  
α°: Angulation

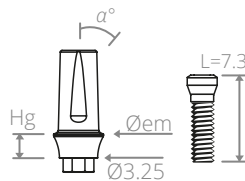
Screwing 30 N.cm  
Delivered with a screw Ref. VIM052

Indication



## ■ PEEK Platform switching temporary abutment

Ø implant	Øem (mm)	Hg (mm)	α°	Product code	Preview
Ø3.5	Ø4.25	2	0°	O-MPS300	
Ø4	Ø6		0°	O-MPS500	
Ø5					

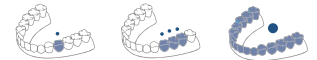


Technical pattern

Hg: Gingival height  
Øem: Emergence diameter  
α°: Angulation

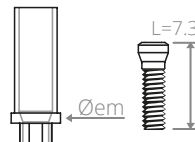
Screwing 30 N.cm  
Delivered with a screw Ref. VIM052

Indication



## ■ Non-rotational castable abutment

Ø implant	Øem (mm)	Product code	Preview
Ø3.5	Ø4	O-MC300	
Ø4	Ø4	O-MC400	
Ø5	Ø5	O-MC500	

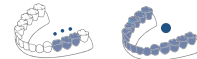


Technical pattern

Øem: Emergence diameter

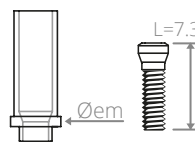
Screwing 30 N.cm  
Delivered with 2 screws Ref. VIM052

Indication



## ■ Rotational castable abutment

Ø implant	Øem (mm)	Product code	Preview
Ø3.5	Ø4	O-MCR300	
Ø4	Ø4	O-MCR400	
Ø5	Ø5	O-MCR500	

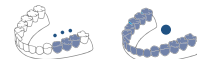


Technical pattern

Øem: Emergence diameter

Screwing 30 N.cm  
Delivered with 2 screws Ref. VIM052

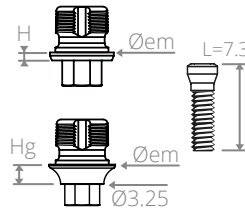
Indication





## ■ Non-rotational Ti-base / connection base

Ø implant	Øem (mm)	Hg (mm)	Product code	Preview
Ø3.5	Ø4.25	0.5	O-BAS300	
Ø4			O-BAS400	
Ø5			O-BAS500	
Ø3.5 Ø4 Ø5	Ø5	1.5	O-BAS410	



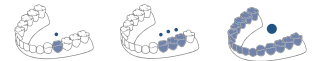
Technical pattern

Hg: Gingival height  
Øem: Emergence diameter

Screwing  
30 N.cm  
Delivered with 2  
screws Ref. VIM052

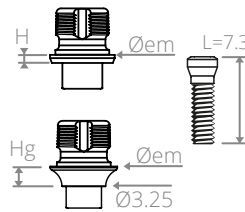
Special CAD / CAM

Indication



## ■ Rotational Ti-base / connection base

Ø implant	Øem (mm)	Hg (mm)	Product code	Preview
Ø3.5	Ø4.25	0.5	O-BASR300	
Ø4			O-BASR400	
Ø5			O-BASR500	
Ø3.5 Ø4 Ø5	Ø5	1.5	O-BASR410	



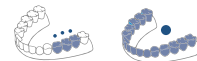
Technical pattern

Hg: Gingival height  
Øem: Emergence diameter

Screwing  
30 N.cm  
Delivered with 2  
screws Ref. VIM052

Special CAD / CAM

Indication



## ■ CEREC®-compatible Ti-base

Ø implant	Gingival height (mm)		Block S	Ø Shldr* S	Block L	Ø Shldr* L	Preview
	0.5	1.5					
Ø3.5	O-TBSS300 <sup>(1)</sup>	O-TBSS310 <sup>(1)</sup>	FX 3.4 S	Ø3.9	N/A	N/A	
	O-TBS300	O-TBS410	N/A	N/A	AT OS 3.5/4.0	Ø4.4	
Ø4.0	O-TBS400		N/A	N/A	AT OS 4.5/5.0	Ø5.0	
Ø5.0	N/A	N/A					
	O-TBS500						

### Tips for use

The CEREC®-compatible Ti-bases are used with SIRONA® scanbodies:

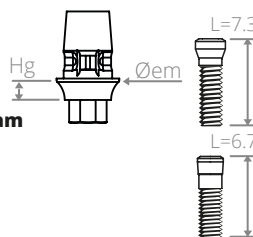


Product code for **OmnicaM**  
**6431311** block S  
**6431329** block L



Product code for **Bluecam**  
**6431295** block S  
**6431303** block L

The CEREC® brand is the exclusive property of SIRONA.



Technical pattern

Hg: Gingival height  
Øem: Emergence diameter

Screwing  
30 N.cm  
Delivered with  
2 screws  
Ref. VIM053 for  
O-TBSS300, O-TBSS310  
Ref. VIM052 for others

Special CAD / CAM

Indication



(\* ) Shoulder

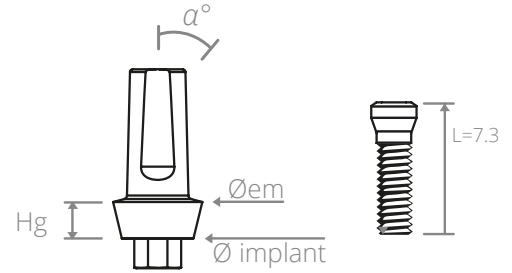
(1) These references require "S" blocks, unlike the others which use "L" blocks.



# FIXED CEMENTED PROSTHESIS SOLUTIONS

## Titanium final abutment

Ø implant	Øem (mm)	α°	Hg (mm)	Product code	Preview		
Ø3.5	Ø4.25	0°	0	O-MT300			
			2	O-MT320			
			4	O-MT340			
		15°	0	0	O-MT301		
				2	O-MT321		
				4	O-MT341		
				0	O-MT302		
		2	O-MT322				
		4	O-MT342				
		25°	0	0	O-MT302		
				2	O-MT322		
				4	O-MT342		
Ø4	Ø5	0°	0	ZC-MT000			
			2	O-MT420			
			4	O-MT440			
		15°	0	0	ZC-MT001		
				2	O-MT421		
				4	O-MT441		
				0	ZC-MT002		
		2	O-MT422				
		4	O-MT442				
		Ø5	Ø6	0°	0	O-MT500	
					2	O-MT520	
					4	O-MT540	
15°	0			0	O-MT501		
				2	O-MT521		
				4	O-MT541		
25°	0			0	O-MT502		
				2	O-MT522		
				4	O-MT542		



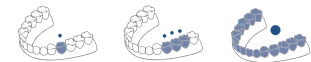
Standard emergence profile

### Technical pattern

Hg: Gingival height  
 Øem: Emergence diameter  
 α°: Angulation

Screwing  
 30 N.cm  
 Delivered with  
 2 screws  
 Ref. VIM052

### Indication

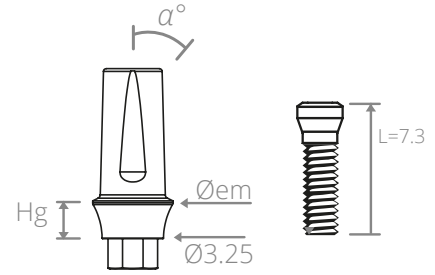






■ Titanium Platform switching final abutment

Ø implant	Øem (mm)	α°	Hg (mm)	Product code	Preview
Ø3.5 Ø4 Ø5	Ø4.25	0°	1	O-MTS310	
			2	O-MTS320	
		15°	1	O-MTS311	
			2	O-MTS321	
		25°	1	O-MTS312	
			2	O-MTS322	
	Ø5	0°	1	O-MTS410	
			2	O-MTS420	
		15°	1	O-MTS411	
			2	O-MTS421	
		25°	1	O-MTS412	
			2	O-MTS422	



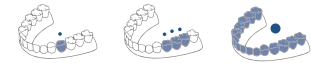
Platform switching emergence profile

Technical pattern

Hg: Gingival height  
Øem: Emergence diameter  
α°: Angulation

Screwing  
30 N.cm  
Delivered with  
2 screws  
Ref. VIM052

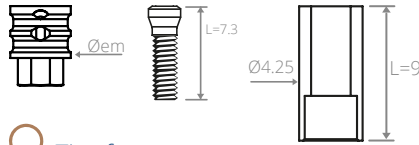
Indication



# FIXED SCREW-RETAINED PROSTHESIS SOLUTIONS

## ■ Non-rotational Cr/Co screw-retained overflow ring

Ø implant	Øem (mm)	Product code	Preview
Ø3.5 Ø4.0 Ø5.0	Ø3.5	O-MS301	



### Technical pattern

Øem: Emergence diameter  
Delivered with a castable sheath Ref. GS930

Screwing 30 N.cm  
Delivered with 2 screws  
Ref. VIM052

### Indication

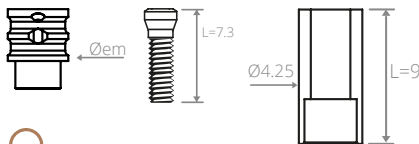


### Tips for use

The overflow rings can also be used for cemented rehabilitation.

## ■ Rotational Cr/Co screw-retained overflow ring

Ø implant	Øem (mm)	Product code	Preview
Ø3.5 Ø4.0 Ø5.0	Ø3.5	O-MSR301	



### Technical pattern

Øem: Emergence diameter  
Delivered with a castable sheath Ref. GS930

Screwing 30 N.cm  
Delivered with 2 screws  
Ref. VIM052

### Indication

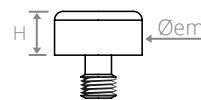


### Tips for use

The overflow rings can also be used for cemented rehabilitation.

## ■ Protective cap for Multi-Unit Abutment

Ø implant	Øem (mm)	Hc (mm)	Product code	Preview
Ø3.5	Ø4.25		HO-CP300	
Ø4	Ø5	2.5	HO-CP400	
Ø5	Ø6		HO-CP500	

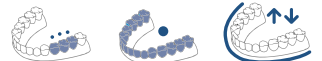


### Technical pattern

Øem: Emergence diameter  
H: Height

Screwing 15 N.cm

### Indication



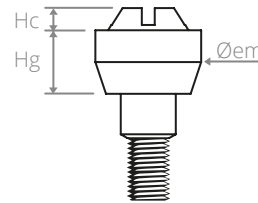
### Colour code

● Ø3.2 ● Ø3.9 ● Ø4.7



## ■ Straight Multi-Unit Abutment

Ø implant	Øem (mm)	Hc (mm)	Hg (mm)	Product code	Preview
Ø3.5	Ø4.25	1	0.7	O-PCS307	
			1.5	O-PCS310	
			3	O-PCS330	
Ø4	Ø5	1	0.7	O-PCS407	
			1.5	O-PCS410	
			3	O-PCS430	
Ø5	Ø6	1	0.7	O-PCS507	
			1.5	O-PCS510	
			3	O-PCS530	



Screwing for the multi-unit abutment  
15 N.cm

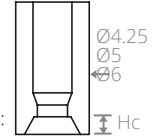
Screwing 30 N.cm  
Delivered with 2 screws Ref. VIM045

### Technical pattern

Øem: Emergence diameter  
Hc: Cone height  
Hg: Gingival height  
Hg1: Min gingival height  
Hg2: Max gingival height

The straight multi-unit abutments are delivered with a castable sheath: Ref. GP004/005/006.

Ref. GP004  
GP005  
GP006

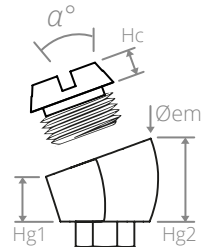
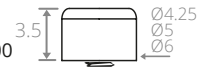


## ■ Angulated Multi-Unit Abutment

Ø implant	Øem (mm)	α°	Hg 1 (mm)	Hg 2 (mm)	Hc (mm)	Product code	Preview
Ø3.5	Ø4.25	20°	2	3.5	1	O-PCS322	
		30°	1.5	4		O-PCS323	
Ø4	Ø5	20°	2	3.5	1	O-PCS422	
		30°	1.5	4		O-PCS423	
Ø5	Ø6	20°	2	3.5	1	O-PCS522	
		30°	1.5	4		O-PCS523	

### Tips for use

Protective cap:  
Ref. HO-CP300/400/500



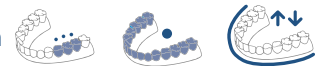
Screwing 30 N.cm  
Delivered with 2 main screws  
Ref. VIM045



Screwing 30 N.cm  
Delivered with 2 secondary screws  
Ref. VIMC045

**Tips for use** Taking impressions for angulated multi-unit abutments Ø3.5 / Ø4 / Ø5 is done using transfer Ref. TDP400 for direct technique or Ref. TIP400 for indirect technique. The model will be cast with an analogue Ref. HP400.

### Indication



## ■ Multi-Unit Abutment Sheath

Ø implant	Hc (mm)	TITANIUM sheath for immediate final prosthesis		PEEK sheath for immediate temporary prosthesis		Cr/Co sheath for screw-retained soldered bar		PEEK Scanbody sheath for multi-unit abutment	
		Product code	Pre-view	Product code	Pre-view	Product code	Pre-view	Product code	Pre-view
Ø3.5	1.2	HO-GCS300		HO-GPCS300		HO-GCR300		HO-GCF300	
Ø4		HO-GCS400		HO-GPCS400		HO-GCR400		HO-GCF400	
Ø5.0		HO-GCS500		HO-GPCS500		HO-GCR400		HO-GCF500	

Titanium or PEEK  
L=8.1

Cr/Co  
L=13

PEEK  
L=8.1

### Technical pattern

Screwing 30 N.cm | Manual screwing Scanbody only

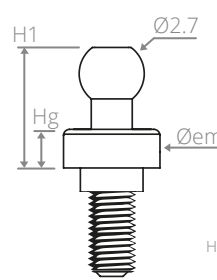
L=5.4 All sheaths are delivered with 2 screws  
Ref. MO-VPC040

### Indication

Special CAD / CAM

## Spherical attachment

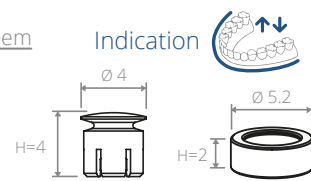
Ø implant	H1 (mm)	Hg (mm)	Type	Product code	Preview
Ø3.5	5	1.5	+ cap	O-ASC350	
	6.5	3	+ cap	O-ASC360	
	5	1.5	+ O-ring	O-ASO350	
	6.5	3	+ O-ring	O-ASO360	
Ø 4	5	1.5	+ cap	O-ASC450	
	6.5	3	+ cap	O-ASC460	
	5	1.5	+ O-ring	O-ASO450	
	6.5	3	+ O-ring	O-ASO460	
Ø 5	5	1.5	+ cap	O-ASC550	
	6.5	3	+ cap	O-ASC560	
	5	1.5	+ O-ring	O-ASO550	
	6.5	3	+ O-ring	O-ASO560	



### Technical pattern

Øem: Emergence diameter  
H1: Collar height

### Indication



Screwing 20 N.cm  
Delivered with:  
- one titanium cap Ref. ASC100 and spacer rings Ref. PRO100 or  
- one O-ring Ref. ASO200

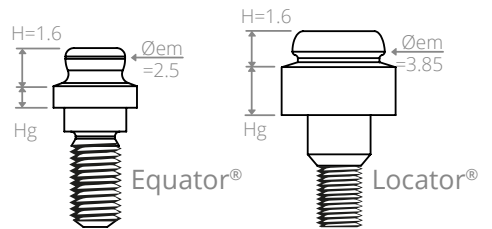
## Equator® & Locator® abutment

Ø implant	Hg (mm)	Equator® range		Locator® range	
		Product code	Preview	Product code	Preview
Ø3.5	1	O-EQU310		O-LOC310	
	2	O-EQU320		O-LOC320	
	3	O-EQU330		O-LOC330	
	4	O-EQU340		O-LOC340	
	5	O-EQU350		O-LOC350	
Ø 4	1	O-EQU410		O-LOC410	
	2	O-EQU420		O-LOC420	
	3	O-EQU430		O-LOC430	
	4	O-EQU440		O-LOC440	
	5	O-EQU450		O-LOC450	
Ø 5	1	O-EQU510		O-LOC510	
	2	O-EQU520		O-LOC520	
	3	O-EQU530		O-LOC530	
	4	O-EQU540		O-LOC540	
	5	O-EQU550		O-LOC550	

### Technical pattern

Øem: Emergence diameter  
Hg: Gingival height

### Indication

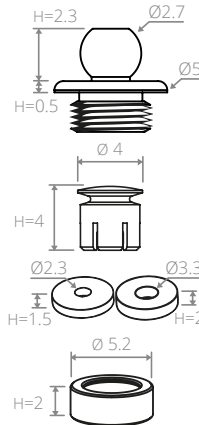


Screwing 20 N.cm



## Spherical attachment accessories

Product name	Product code	Preview
Spherical attachment for Angulated Multi-Unit Abutment + Cap + Spacer rings	ASPC100	
Titanium cap + spacer rings	ASC100	
Spacer rings	PRO100	
O-ring	ASO200	
Silicon joint for O-ring (x5)	ASJ200	



### Technical pattern

H: Height

### Indication



### Tips for use

- The spherical attachment for Angulated Multi-Unit Abutment Ref.ASPC100 is compatible with all Multi-Unit Abutments shown on P. 43 [to be ordered separately].

- O-ring Ref.ASO200 is used when the implant axis is straight and the occlusal height is reduced.

- Cap Ref.ASC100 is used when the implant axis needs to be corrected.

- The spacer rings Ref. PRO100 can be resized.

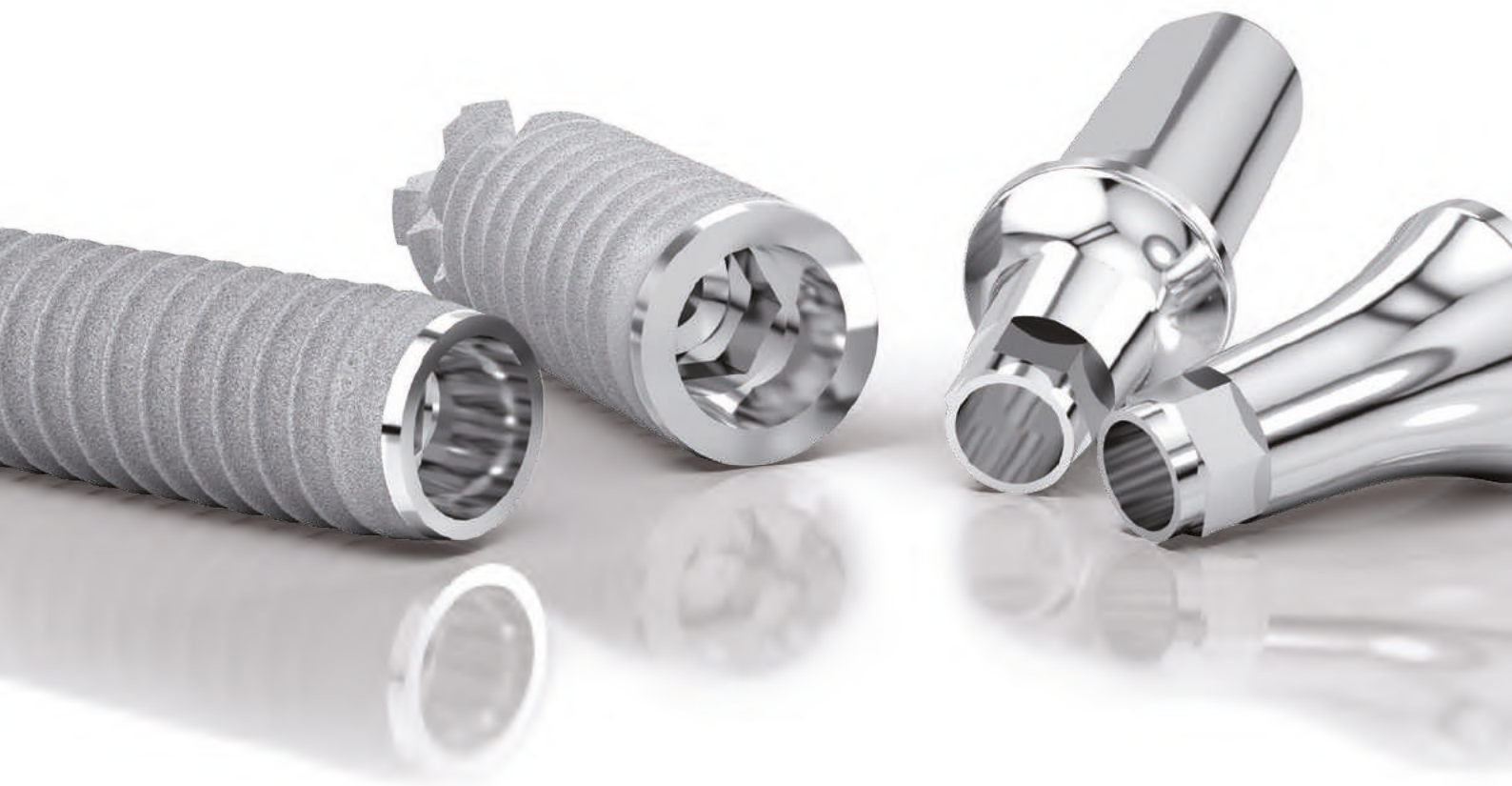
- The O-ring retention joints Ref.ASJ200 should be changed every year.

## Equator® abutment accessories

Product name	Strength	Product code	Preview
Equator® pack: cap + retentions	N/A	ASCEQU100 (192ECE)	
Temporary nylon retention joint (x4) black	N/A	ASJEQU100 (140CEN)	
Extra soft RETENTION JOINT (x4) yellow	0.6 kg	ASJEQU200 (140CEG)	
SOFT Retention joint (x4) pink	1.2 kg	ASJEQU300 (140CER)	
STANDARD retention joint (x4) clear	1.6 kg	ASJEQU400 (140CET)	
HIGH Retention joint (x4) violet	2.5 kg	ASJEQU500 (140CEV)	
Equator® multi-function core tool	N/A	A-CEQU100 (485IC)	
Equator® tip for retention extraction	N/A	A-EEQU100 (491EC)	
Equator® tip for torque wrench	N/A	A-MEQ006 772CSF	
Equator® tip for contra-angle	N/A	ETEQ600 (760CE)	

## Locator® abutment accessories

Product name	Strength	Product code	Preview
Locator® pack: cap + retentions + spacer ring	N/A	ASCLOC100 (8519)	
Temporary nylon retention joint (x4) black	N/A	ASJLOC100 (8515)	
LIGHT nylon retention joint (x4) red	40° Div max / 0.45 kg	ASJLOC200 (8548)	
STANDARD nylon retention joint (x4) green	40° Div max / 1.81 kg	ASJLOC300 (8547)	
EXTRA LIGHT nylon retention joint (x4) blue	20° Div max / 0.68 kg	ASJLOC400 (8529)	
LIGHT nylon retention joint (x4) pink	20° Div max / 1.36 kg	ASJLOC500 (8527)	
STANDARD nylon retention joint (x4) clear	20° Div Max / 2.27 kg	ASJLOC600 (8524)	
Locator® core tool multi-function 3 in 1	N/A	A-CLOC100 (8393)	
Locator® tip for torque wrench	N/A	A-ECDL100	
Locator® screw tool	N/A	A-MEL100	
Locator® angle measurement gauge	N/A	A-GALOC100 (9530)	
Locator® parallel post for divergence measurement	N/A	A-PALOC100 (8517)	



Implant systems with  
**M Connection**  
Morse taper &  
hexagonal indexing





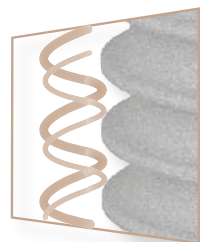
### SWISSCLIP TECHNOLOGY

- Clipping system between the implant and the screw tools for contra-angle or for torque wrench
- Gripping and direct positioning of the implant without digital contact
- Real time-saving and high accuracy
- Available for direct technique transfers and for the angulation kit



### ASYNCHRONOUS DUAL SCREW THREAD

- Self-tapping rounded macrothreads
- Prevention of cortical bone compression phenomena
- Optimal primary stability



### MATERIALS

- **Grade 4 Titanium:** T60 commercially pure  
Grade 4 T60 commercially pure titanium meets the requirements of ISO 5832-2 and the American Society for Testing and Materials (ASTM F67 3.7065)



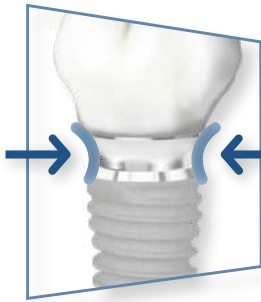




## 2 STAGE IMPLANTS - BONE LEVEL

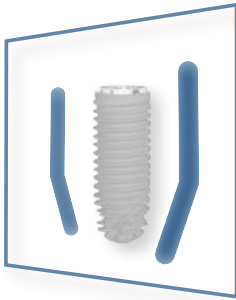
The perfect implant/abutment fit with Platform Switching releases a new biological space for better tissue stability.

### PLATFORM SWITCHING



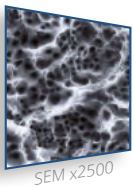
- Gingival ring-shaped sleeve around the implant
- Absolute imperviousness to bacterial attacks
- Reduction of micro-movements and inflammatory infiltration on the peri-implant crestal bone
- Long-lasting aesthetics, bone tissue stability and soft tissue preservation

### CCS BIOSHAPE

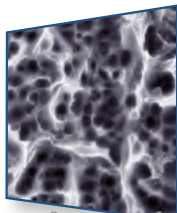


- Conical cruciform apex with a wide thread diameter
- Cylindrical body to maintain close bone contact
- Spherical collar with a bevelled top to limit bone stress and preserve the crestal bone
- Optimal primary stability and insertion safety

### SURFACE TREATMENT



SEM x2500



SEM x5000

The implants incorporate a sandblasting and hydrofluoric acid-etching surface treatment that promotes the osseointegration process.

### ATRAUMATIC APEX



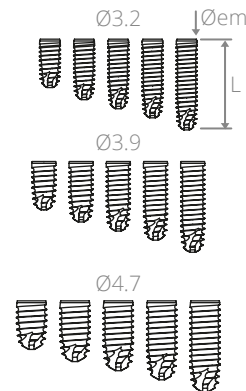
- Apex with atraumatic convexity
- Ideal for sinus lifts
- Self-tapping claw



# IMPLANT SURGERY & MANAGEMENT OF GINGIVAL TISSUES

## Dental implant range M - Family: M

Diameter (mm) \ Length (mm)	Platform Ø3.2 mm	Platform Ø3.9 mm	Platform Ø4.7 mm	Preview
8 mm	M308	M408	M508	
10 mm	M310	M410	M510	
11.5 mm	M311	M411	M511	
13 mm	M313	M413	M513	
15 mm	M315	M415	M515	



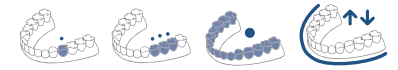
### Technical pattern

Øem: Emergence diameter  
L: Length



Delivered with a cover screw

### Indication

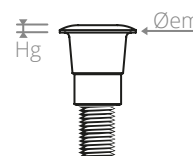


### Colour code

● Ø3.2 ● Ø3.9 ● Ø4.7

## Cover screw

Ø implant	Øem (mm)	Hg (mm)	Product code	Preview
Ø3.2	Ø2.9	0.3	M-VIO350	
Ø3.9	Ø3.1		M-VIO400	
Ø4.7	Ø3.6		M-VIO500	



### Technical pattern

Øem: Emergence diameter

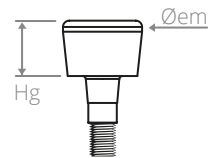


### Colour code

● Ø3.2 ● Ø3.9 ● Ø4.7

■ Narrow healing screw

Ø implant	Øem (mm)	Hg (mm)	Product code	Preview
Ø3.2	Ø3.5	3.5	M-VTS330	
Ø3.9	Ø4.2		M-VTS430	
Ø4.7	Ø5.6		M-VTS530	



Technical pattern  
 Øem: Emergence diameter  
 Hg: Gingival height

 Manual screwing

Colour code  
 ● Ø3.2 ● Ø3.9 ● Ø4.7

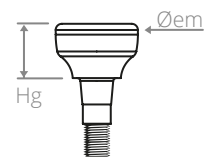


Tips for use

The narrow healing screw is useful in the case of an interdental space not allowing the use of standard screws.

■ Regular and wide healing screws

Ø implant	Øem (mm)	Hg (mm)	Product code	Preview
Ø3.2	Ø4.55	3.5	M-VT330	
		5	M-VT350	
		7	M-VT370	
Ø3.9	Ø6	3.5	M-VTL330	
		5	M-VTL350	
		7	M-VTL370	
Ø4.7	Ø7.3	3.5	M-VT430	
		5	M-VT450	
		7	M-VT470	
Ø3.9	Ø6.3	3.5	M-VTL430	
		5	M-VTL450	
		7	M-VTL470	



Technical pattern  
 Øem: Emergence diameter  
 Hg: Gingival height

 Manual screwing

Colour code  
 ● Ø3.2 ● Ø3.9 ● Ø4.7



Tips for use

The wide healing screw is useful in the case of a gingival preparation for receiving a large crown (e.g. posterior sector) and to facilitate the installation of the impression transfer.



# COMPONENTS FOR THE IMPRESSION-TAKING AND MASTER CAST-MAKING

## ■ Impression Transfer - Direct Technique "Pick-up"

Ø implant	Øem (mm)	Hr (mm)	Hc (mm)	Product code	Preview
Ø3.2	Ø4.25	1.5	2.5	M-TDS300	
		1.5		M-TD300	
		2.5		M-TD350	
Ø3.9	Ø5	1.5	2.5	M-TD400	
		2.5		M-TD450	
Ø4.7	Ø6	1.5	2.5	M-TD500	
		2.5		M-TD550	

**Technical pattern**  
 Hc: Cylindrical height  
 Øem: Emergence diameter  
 Hr: Radial height

**Manual screwing**  
 Delivered with a screw Ref. VTD186

**Indication**

**Colour code** ● Ø3.2 ● Ø3.9 ● Ø4.7

**Tips for use** M-TDS300 for an M-MTS310 / 311 / 312 abutment. M-TD350 / 450 / 550 for abutments with 3 and 5 mm shoulder.

## ■ Impression Transfer - Indirect Technique "Pop-in"

Ø implant	Øem (mm)	Hr (mm)	Hc (mm)	Product code	Preview
Ø3.2	Ø4.25	1.5	2.5	M-TI300	
		2.5		M-TI350	
Ø3.9	Ø5	1.5	2.5	M-TI400	
		2.5		M-TI450	
Ø4.7	Ø6	1.5	2.5	M-TI500	
		2.5		M-TI550	

**Technical pattern**  
 Hc: Cylindrical height  
 Øem: Emergence diameter  
 Hr: Radial height

**Manual screwing**  
 Delivered with a screw Ref. VTI157

**Indication**

**Colour code** ● Ø3.2 ● Ø3.9 ● Ø4.7

**Tips for use** M-TI350 / 450 / 550 for abutments with 3 and 5 mm shoulder.

## ■ Impression Transfer - Direct Technique "SwissClip"

Ø implant	Øem (mm)	Hr (mm)	Hc (mm)	Product code	Preview
Ø3.2	Ø4.25	1.5	2.5	M-TDC300	
Ø3.9	Ø5			M-TDC400	
Ø4.7	Ø6			M-TDC500	

**Technical pattern**  
 Hc: Cylindrical height  
 Øem: Emergence diameter  
 Hr: Radial height

**Indication**

**Colour code** ● Ø3.2 ● Ø3.9 ● Ø4.7

**Tips for use** Optimal use when the implant axis is straight.

## ■ Impression Transfer - Direct Technique for Multi-Unit Abutment

Ø implant	Øem (mm)	Hc (mm)	Product code	Preview
Ø3.2	Ø4.25	3	HO-TDP300	
Ø3.9	Ø5		TDP400	
Ø4.7	Ø6		TDP500	

**Technical pattern**  
 Hc: Cylindrical height  
 Øem: Emergence diameter

**Manual screwing**  
 Delivered with a screw Ref. VTD098

**Indication**

**Colour code** ● Ø3.2 ● Ø3.9 ● Ø4.7

## ■ Impression Transfer - Indirect Technique for Multi-Unit Abutment

Ø implant	Øem (mm)	Hc (mm)	Product code	Preview
Ø3.2	Ø4.25	3	HO-TIP300	
Ø3.9	Ø5		TIP400	
Ø4.7	Ø6		TIP500	

**Technical pattern**  
 Hc: Cylindrical height  
 Øem: Emergence diameter

**Manual screwing**  
 Delivered with a screw Ref. VTI088

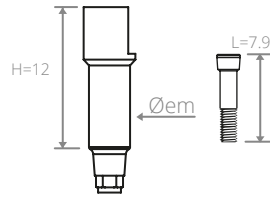
**Indication**

**Colour code** ● Ø3.2 ● Ø3.9 ● Ø4.7



## Scanbody - Digital transfer

Ø implant	Øem (mm)	Product code	Preview
Ø3.2	Ø3.5	M-SCN300	
Ø3.9		M-SCN400	
Ø4.7		M-SCN500	



### Technical pattern

H: PEEK part height  
Øem: Emergence diameter

Special CAD / CAM

Manual screwing  
Delivered with a screw Ref. VIM064

Indication

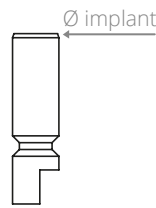
Colour code ● Ø3.2 ● Ø3.9 ● Ø4.7

For multi-unit abutment restorations, use the PEEK scanbodies sheaths provided for this purpose (P43).

Tips for use

## Implant analogue

Ø implant	Product code	Preview
Ø3.2	M-RL300	
Ø3.9	M-RL400	
Ø4.7	M-RL500	



### Technical pattern

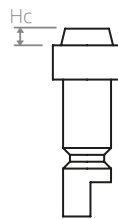
Ø implant: Implant platform diameter

Indication

Colour code ● Ø3.2 ● Ø3.9 ● Ø4.7

## Multi-unit abutment analogue

Ø implant	Hc	Product code	Preview
Ø3.2	1	HO-HPS300	
Ø3.9		HPS400	
Ø4.7		HPS500	



### Technical pattern

Ø implant: Implant platform diameter

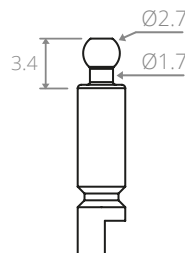
Hc: Cone height (replica of the multi-unit abutment)

Indication

Colour code ● Ø3.2 ● Ø3.9 ● Ø4.7

## Spherical attachment analogue

Ø implant	Product code	Preview
Ø3.2 Ø3.9 Ø4.7	HAS001	



### Technical pattern

Compatible with cap or O-ring retention systems

Indication

## Equator® abutment analogue

Ø implant	Product code	Preview
Ø3.5 Ø4 Ø5	HEQU000 (144AE)	

## Equator® abutment transfer

Ø implant	Product code	Preview
Ø3.5 Ø4 Ø5	TEQU200 (x2) (044CAIN)	

## Locator® abutment analogue

Ø implant	Product code	Preview
Ø3.5 Ø4	HLOC400 (8530)	
Ø5	HLOC500 (8516)	

## Locator® abutment transfer

Ø implant	Product code	Preview
Ø3.5 Ø4 Ø5	TDLOC100 (8505)	

# Standard prosthetic solutions

## Cemented prosthesis

Titanium final abutment



PEEK temporary abutment



Non-rotational overflow ring + Castable sheath

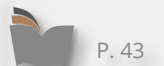


## Screw-retained prosthesis

Non-rotational overflow ring + Castable sheath



Straight or angulated multi-unit abutment + Castable sheath



## Secondary elements

PEEK sheath for immediate temporary prosthesis



Titanium sheath for immediate final prosthesis



Cr/Co sheath for soldered bar



# Customised prosthetic solutions

Additional parts for CAD / CAM use

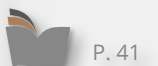
CEREC®-compatible Ti-base



Non-rotational Ti-base



Rotational Ti-base





# GENERAL PROSTHETIC SYNOPSIS

## Removable prosthesis

### Secondary elements

Retention, accessories and instrumentation



Retention, accessories and instrumentation



Spherical attachment + Cap or O-ring



P. 44



Equator® abutment



P. 44



Locator® abutment



P. 44



Straight or angulated multi-unit abutment + Castable sheath



P. 42



# M Baby M



## Caption and comments



SINGLE-UNIT FIXED RESTORATION



FULL-ARCH FIXED RESTORATION



2 STAGE IMPLANT BONE LEVEL



COMPONENT THAT CAN BE USED BY YOUR CAD / CAM SYSTEM



MULTIPLE-UNIT FIXED RESTORATION



REMOVABLE RESTORATION



REFER TO THE SPECIFIED PAGES



RECOMMENDED TIGHTENING TORQUE



The final prosthetic components are gradually being delivered with 2 screws:  
- 1 laboratory screw,  
- 1 final screw.

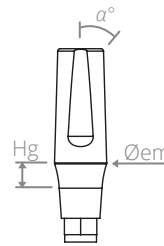




# FIXED CEMENTED PROSTHESIS SOLUTIONS

## Narrow titanium final abutment

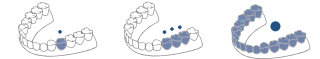
Ø implant	Øem (mm)	α°	Hg (mm)	Product code	Preview
Ø3.2	Ø3.2	0°	1.5	M-MTS310	
		15°		M-MTS311	
		25°		M-MTS312	



Technical pattern

Screwing 30 N.cm  
Delivered with 2 screws Ref. VIM064

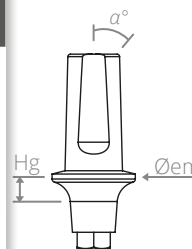
Indication



**Tips for use** Narrow abutments Ref. M-MTS 310 / 311 / 312 are indicated in the case of reduced interdental space [e.g. central mandibular incisors]

## PEEK temporary abutment

Ø implant	Øem (mm)	α°	Hg (mm)	Product code	Preview
Ø3.2	Ø4.25	0°	1.5	M-MP300	
		15°		M-MP301	
Ø3.9	Ø5	0°	1.5	M-MP400	
		15°		M-MP401	
Ø4.7	Ø6	0°	1.5	M-MP500	
		15°		M-MP501	



Technical pattern

Screwing 30 N.cm  
Delivered with a screw Ref. VIM064

Indication



## Titanium final abutment

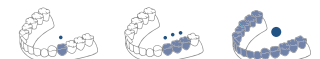
Ø implant	Øem (mm)	α°	Hg (mm)	Product code	Preview
Ø3.2	Ø4.25	0°	0.7	M-MT300	
			1.5	M-MT310	
			3	M-MT330	
			5	M-MT350	
		15°	0.7	M-MT301	
			1.5	M-MT311	
			3	M-MT331	
			5	M-MT351	
		25°	0.7	M-MT302	
			1.5	M-MT312	
			3	M-MT332	
			5	M-MT352	
Ø3.9	Ø5	0°	0.7	M-MT400	
			1.5	M-MT410	
			3	M-MT430	
			5	M-MT450	
		15°	0.7	M-MT401	
			1.5	M-MT411	
			3	M-MT431	
			5	M-MT451	
		25°	0.7	M-MT402	
			1.5	M-MT412	
			3	M-MT432	
			5	M-MT452	

Technical pattern

L=6.6 Hg: Gingival height  
Øem: Emergence diameter  
α°: Angulation

OR Screwing 30 N.cm  
Delivered with 2 titanium abutment screws Ref. VIM051 if Hg < or = 0.7 mm  
or one titanium abutment screw Ref. VIM064 if Hg > or = 1.5 mm

Indication

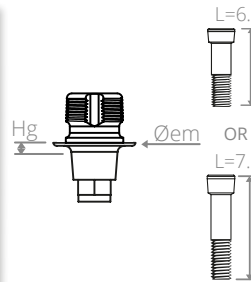


Ø implant	Øem (mm)	α°	Hg (mm)	Product code	Preview
Ø4.7	Ø6	0°	0.7	M-MT500	
			1.5	M-MT510	
			3	M-MT530	
			5	M-MT550	
		15°	0.7	M-MT501	
			1.5	M-MT511	
			3	M-MT531	
			5	M-MT551	
		25°	0.7	M-MT502	
			1.5	M-MT512	
			3	M-MT532	
			5	M-MT552	



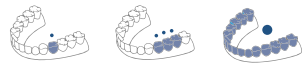
## Non-rotational Ti-base / connection base

Ø implant	Øem (mm)	Hg (mm)	Product code	Preview
Ø3.2	Ø4.25	0.7	M-BAS307	
		1.5	M-BAS310	
Ø3.9	Ø5	0.7	M-BAS407	
		1.5	M-BAS410	
Ø4.7	Ø6	0.7	M-BAS507	
		1.5	M-BAS510	



**Technical pattern**  
 Hg: Gingival height  
 Øem: Emergence diameter

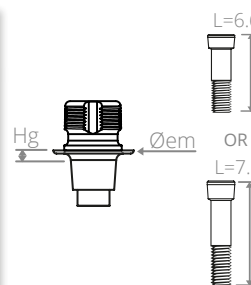
**Special CAD / CAM**

**Indication** 

**Screwing 30 N.cm**  
 Delivered with 2 screws Ref. VIM051 if Hg = 0.7 mm or Ref. VIM064 if Hg = 1.5 mm

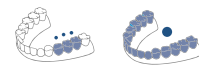
## Rotational Ti-base / connection base

Ø implant	Øem (mm)	Hg (mm)	Product code	Preview
Ø3.2	Ø4.25	0.7	M-BASR307	
		1.5	M-BASR310	
Ø3.9	Ø5	0.7	M-BASR407	
		1.5	M-BASR410	
Ø4.7	Ø6	0.7	M-BASR507	
		1.5	M-BASR510	



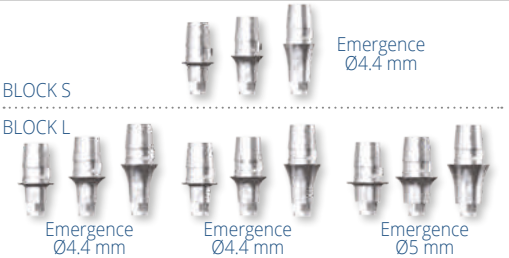

**Technical pattern**  
 Hg: Gingival height  
 Øem: Emergence diameter

**Special CAD / CAM**

**Indication** 

**Screwing 30 N.cm**  
 Delivered with 2 screws Ref. VIM051 if Hg = 0.7 mm or Ref. VIM064 if Hg = 1.5 mm

## CEREC®-compatible Ti-base

Ø Im-plant	Gingival height (mm)		Block S	Ø Shldr*S	Block L	Ø Shldr*L	Preview
	0.7	1.5					
Ø3.2	M-TBSS307 <sup>(1)</sup>	M-TBSS310 <sup>(1)</sup>	FX 3.4 S	Ø3.9	N/A	N/A	 Emergence Ø4.4 mm
	M-TBS307	M-TBS310	N/A	N/A	AT OS 3.5/4.0	Ø4.4	
Ø3.9	M-TBS407	M-TBS410	N/A	N/A	AT OS 3.5/4.0	Ø4.4	 Emergence Ø4.4 mm
	M-TBS507	M-TBS510	N/A	N/A	AT OS 4.5/5.0	Ø5.0	

### Tips for use

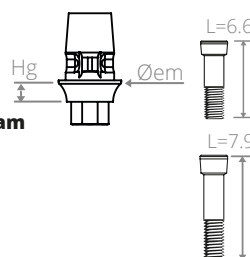
The CEREC®-compatible Ti-bases are used with SIRONA® scanbodies:



Product code for **Omniscam**  
**6431311** block S  
**6431329** block L

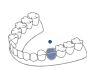


Product code for **Bluecam**  
**6431295** block S  
**6431303** block L



**Technical pattern**  
 Hg: Gingival height  
 Øem: Emergence diameter

**Special CAD / CAM**

**Indication** 

**Screwing 30 N.cm**  
 Delivered with 2 screws Ref. VIM051 if Hg = 0.7 mm or Ref. VIM064 if Hg = 1.5 mm

(\*) Shoulder

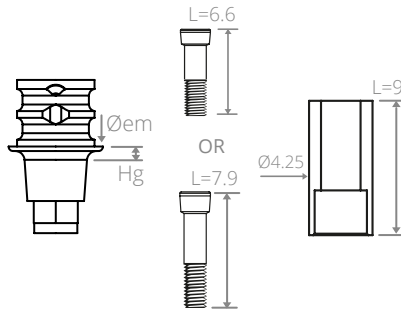
(1) These references require "S" blocks, unlike the others which use "L" blocks.



# FIXED SCREW-RETAINED PROSTHESIS SOLUTIONS

## ■ Non-rotational Cr/Co screw-retained overflow ring

Ø implant	Øem (mm)	Hg (mm)	Product code	Preview
Ø3.2	Ø4.25	0.7	M-MS307	
		1.5	M-MS300	
Ø3.9	Ø4.25	0.7	M-MS407	
		1.5	M-MS400	
Ø4.7	Ø5	0.7	M-MS507	
		1.5	M-MS500	



### Technical pattern

Øem: Emergence diameter  
Delivered with a castable sheath Ref. GS930

### Indication



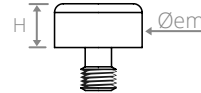
### Tips for use

The overflow rings can also be used for cemented rehabilitation.

Screwing 30 N.cm  
Delivered with 2 screws  
Ref. VIM051 if Hg = 0.7 mm  
or  
Ref. VIM064 if Hg = 1.5 mm

## ■ Protective cap for Multi-Unit Abutment

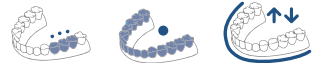
Ø implant	Øem (mm)	Hc (mm)	Product code	Preview
Ø3.5	Ø4.25		HO-CP300	
Ø4	Ø5	2.5	HO-CP400	
Ø5	Ø6		HO-CP500	



### Technical pattern

Øem: Emergence diameter  
H: Height

### Indication



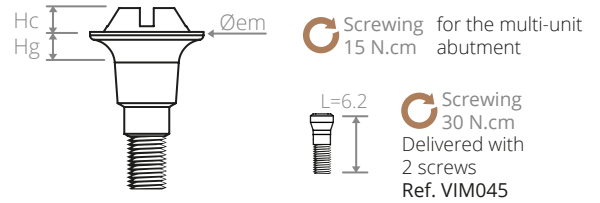
### Colour code

● Ø3.2 ● Ø3.9 ● Ø4.7

Screwing 15 N.cm

## Straight Multi-Unit Abutment

Ø implant	Øem (mm)	Hc (mm)	Hg (mm)	Product code	Preview
Ø3.2	Ø4.25	0.7		M-PCS307	
		1.5		M-PCS310	
		3		M-PCS330	
Ø3.9	Ø5	0.7		M-PCS407	
		1.5		M-PCS410	
		3		M-PCS430	
Ø4.7	Ø6	0.7		M-PCS507	
		1.5		M-PCS510	
		3		M-PCS530	

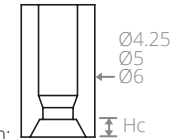


### Technical pattern

Øem: Emergence diameter  
 Hc: Cone height  
 Hg: Gingival height  
 Hg1: Min gingival height  
 Hg2: Max gingival height

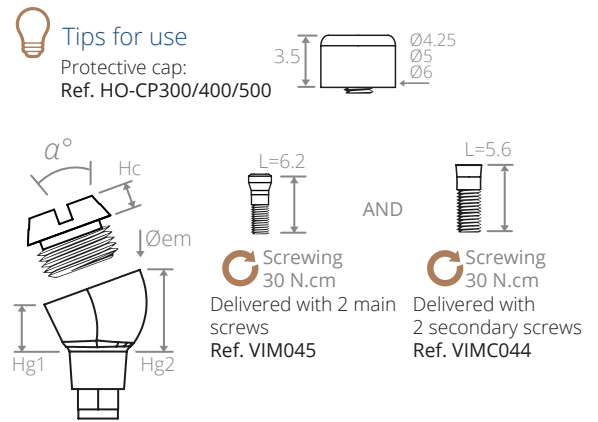
The straight multi-unit abutments are delivered with a castable sheath:  
Ref. GP004/005/006.


Ref. GP004  
GP005  
GP006

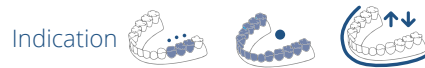


## Angulated Multi-Unit Abutment

Ø implant	Øem (mm)	α°	Hg 1 (mm)	Hg 2 (mm)	Hc (mm)	Product code	Preview
Ø3.2		20°	2	3.5	1	M-PCS322	
		30°	1.5	4		M-PCS323	
Ø3.9	Ø5	20°	2	3.5	1	M-PCS422	
		30°	1.5	4		M-PCS423	
Ø4.7		20°	2	3.5	1	M-PCS522	
		30°	1.5	4		M-PCS523	

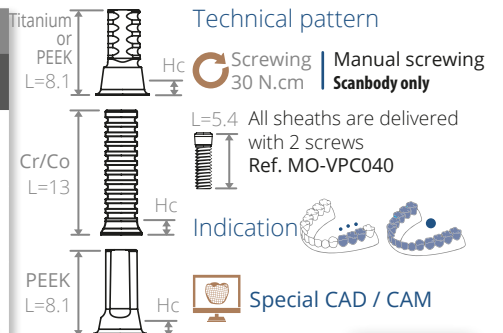


 **Tips for use** Taking impressions for Angulated Multi-Unit Abutments Ø3.2 / Ø3.9 / Ø4.7 is done using transfer Ref. TDP400 for direct technique or Ref. TIP400 for indirect technique. The model will be cast with an analogue Ref. HP400.



## Multi-Unit Abutment Sheath

Ø implant	Hc (mm)	TITANIUM sheath for immediate final prosthesis		PEEK sheath for immediate temporary prosthesis		Cr/Co sheath for screw-retained soldered bar		PEEK Scanbody sheath for multi-unit abutment	
		Product code	Pre-view	Product code	Pre-view	Product code	Pre-view	Product code	Pre-view
Ø3.2	1.2	HO-GCS300		HO-GPCS300		HO-GCR300		HO-GCF300	
Ø3.9		HO-GCS400		HO-GPCS400		HO-GCR400		HO-GCF400	
Ø4.7		HO-GCS500		HO-GPCS500		HO-GCR400		HO-GCF500	

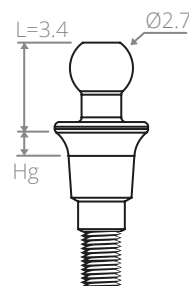




# STABILISATION OF REMOVABLE PROSTHESIS SOLUTIONS

## Spherical attachment

Ø implant	Hg (mm)	Type	Product code	Preview
Ø3.2	1.5	+ cap	M-ASC350	
		+ O-ring	M-ASO350	
Ø3.9		+ cap	M-ASC450	
		+ O-ring	M-ASO450	
Ø4.7		+ cap	M-ASC550	
		+ O-ring	M-ASO550	

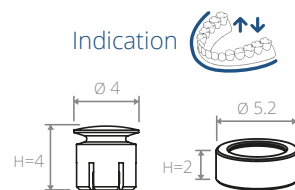


### Technical pattern

Øem: Emergence diameter  
Hg: Gingival height

Screwing 20 N.cm  
Delivered with:  
- one titanium cap Ref. ASC100 and spacer rings Ref. PRO100 or  
- one O-ring Ref. ASO200

### Indication



## Equator® & Locator® abutment

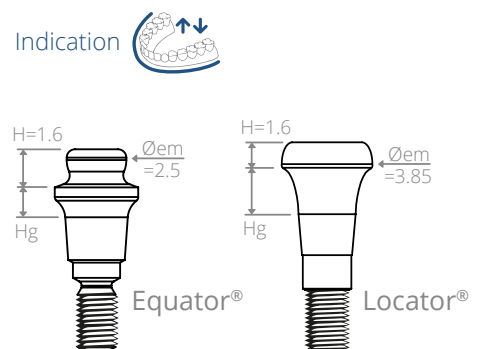
Ø implant	Hg (mm)	Equator® range		Locator® range	
		Product code	Preview	Product code	Preview
Ø3.2	1	M-EQU310		M-LOC310	
	2	M-EQU320		M-LOC320	
	3	M-EQU330		M-LOC330	
	4	M-EQU340		M-LOC340	
	5	M-EQU350		M-LOC350	
Ø 3.9	1	M-EQU410		M-LOC410	
	2	M-EQU420		M-LOC420	
	3	M-EQU430		M-LOC430	
	4	M-EQU440		M-LOC440	
	5	M-EQU450		M-LOC450	
Ø 4.7	1	M-EQU510		M-LOC510	
	2	M-EQU520		M-LOC520	
	3	M-EQU530		M-LOC530	
	4	M-EQU540		M-LOC540	
	5	M-EQU550		M-LOC550	

### Technical pattern





Øem: Emergence diameter  
Hg: Gingival height

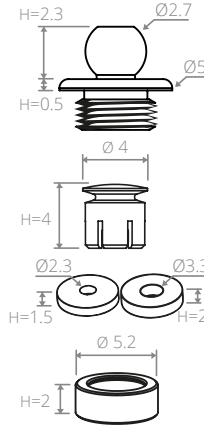
Screwing 20 N.cm

### Indication



■ Spherical attachment accessories

Product name	Product code	Preview
Spherical attachment for Angulated Multi-Unit Abutment + Cap + Spacer rings	ASPC100	
Titanium cap + spacer rings	ASC100	
Spacer rings	PRO100	
O-ring	ASO200	
Silicon joint for O-ring (x5)	ASJ200	



Technical pattern

H: Height

Indication



Tips for use

- The spherical attachment for Angulated Multi-Unit Abutment Ref.ASPC100 is compatible with all Multi-Unit Abutments shown on P. 43 [to be ordered separately].

- O-ring Ref.ASO200 is used when the implant axis is straight and the occlusal height is reduced.

- Cap Ref.ASC100 is used when the implant axis needs to be corrected.

- The spacer rings Ref. PRO100 can be resized.

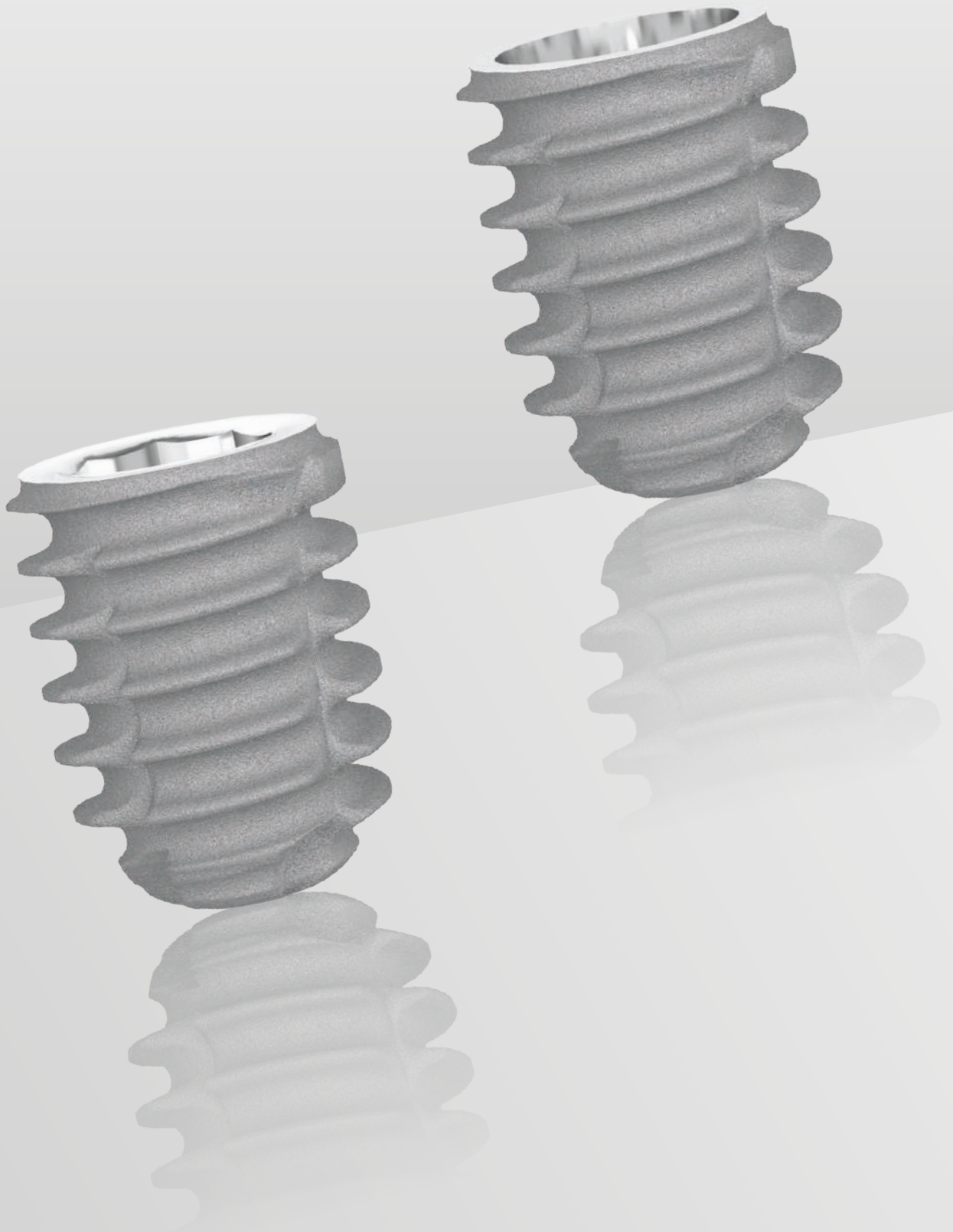
- The O-ring retention joints Ref.ASJ200 should be changed every year.

■ Equator® abutment accessories

Product name	Strength	Product code	Preview
Equator® pack: cap + retentions	N/A	ASCEQU100 (192ECE)	
Temporary nylon retention joint (x4) black	N/A	ASJEQU100 (140CEN)	
Extra soft RETENTION JOINT (x4) yellow	0.6 kg	ASJEQU200 (140CEG)	
SOFT Retention joint (x4) pink	1.2 kg	ASJEQU300 (140CER)	
STANDARD retention joint (x4) clear	1.6 kg	ASJEQU400 (140CET)	
HIGH Retention joint (x4) violet	2.5 kg	ASJEQU500 (140CEV)	
Equator® multi-function core tool	N/A	A-CEQU100 (485IC)	
Equator® tip for retention extraction	N/A	A-EEQU100 (491EC)	
Equator® tip for torque wrench	N/A	A-MEQ006 772CSF	
Equator® tip for contra-angle	N/A	ETEQ600 (760CE)	

■ Locator® abutment accessories

Product name	Strength	Product code	Preview
Locator® pack: cap + retentions + spacer ring	N/A	ASCLOC100 (8519)	
Temporary nylon retention joint (x4) black	N/A	ASJLOC100 (8515)	
LIGHT nylon retention joint (x4) red	40° Div max / 0.45 kg	ASJLOC200 (8548)	
STANDARD nylon retention joint (x4) green	40° Div max / 1.81 kg	ASJLOC300 (8547)	
EXTRA LIGHT nylon retention joint (x4) blue	20° Div max / 0.68 kg	ASJLOC400 (8529)	
LIGHT nylon retention joint (x4) pink	20° Div max / 1.36 kg	ASJLOC500 (8527)	
STANDARD nylon retention joint (x4) clear	20° Div Max / 2.27 kg	ASJLOC600 (8524)	
Locator® core tool multi-function 3 in 1	N/A	A-CLOC100 (8393)	
Locator® tip for torque wrench	N/A	A-ECDL100	
Locator® screw tool	N/A	A-MEL100	
Locator® angle measurement gauge	N/A	A-GALOC100 (9530)	
Locator® parallel post for divergence measurement	N/A	A-PALOC100 (8517)	



# B a b y

Implant Systems  
adapted to  
specific anatomical  
requirements

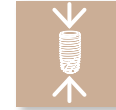




# Baby-M

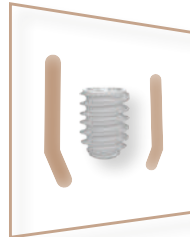
## 6 MM SHORT IMPLANTS - MORSE TAPER CONNECTION

Baby M implants with a Morse taper connection combine the benefits of the Platform Switching technique with a reduced height of 6 mm.



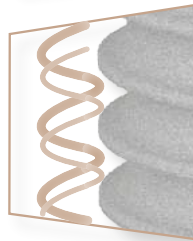
### CYLINDRICAL BIOSHAPE

- Cylindrical body to maintain close bone contact
- Slightly conical atraumatic cruciform apex with a wide thread diameter
- Optimal primary stability and insertion safety



### ASYNCHRONOUS DUAL SCREW THREAD

- Self-tapping rounded macrothreads
- Prevention of cortical bone compression phenomena
- Optimal primary stability



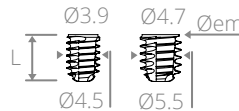
### MATERIALS

- **Grade 4 Titanium:** T60 commercially pure Grade 4 T60 commercially pure titanium meets the requirements of ISO 5832-2 and the American Society for Testing and Materials (ASTM F67 3.7065)



## Dental implant range M - Family: Baby M

Diameter (mm) \ Length (mm)	Implant Ø3.9 mm	Implant Ø4.7 mm	Preview
6 mm	MS406	MS506	



### Technical pattern

Øem: Emergence diameter  
L: Length

Delivered with a cover screw



### Indication



### Colour code

• Ø4 • Ø5

## Specific instrumentation for Baby M

Product name	Product code	Preview
Complete Baby M surgical mini-kit	A-TF002	
Baby M stainless steel surgical box	A-COF005	
Pointer drill with external irrigation L = 4 mm	A-FPT310	
Baby M stop drill No. 1 with external irrigation L = 6 mm	A-FBC100	
Baby M stop drill No. 2 with external irrigation L = 6 mm	A-FBC200	
Baby M stop drill No. 3 with external irrigation L = 6 mm	A-FBC300	
Baby M stop drill No. 4 with external irrigation L = 6 mm	A-FBC400	
Baby M stop drill No. 5 with external irrigation L = 6 mm	A-FBC500	
Short SwissClip screw tool for contra-angle Range M	A-MCA222	
Short hexagonal screwdriver - L = 10.5 mm	A-CHC216	

## Prosthetic solutions for Baby M



### Tips for use

The stages of healing and impression taking and all the prosthetic solutions for Baby M implants are identical to those for the other implants in the M range.





# Baby 8

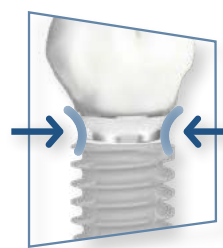


## 6 MM SHORT IMPLANTS - OCTAGONAL CONNECTION

The use of Baby 8 implants with an octagonal connection offers the advantages of reducing the number of surgical procedures and respecting the integrity of the periodontium.

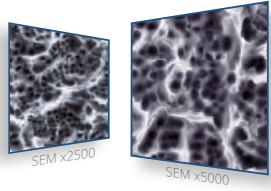


### PLATFORM SWITCHING



- Gingival ring-shaped sleeve around the implant
- Absolute imperviousness to bacterial attacks
- Reduction of micro-movements and inflammatory infiltration on the peri-implant crestal bone
- Long-lasting aesthetics, bone tissue stability and soft tissue preservation

### SURFACE TREATMENT



The implants incorporate a sand-blasting and hydrofluoric acid-etching surface treatment that promotes the osseointegration process.

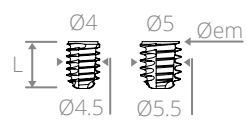
### ATRAUMATIC APEX



- Apex with atraumatic convexity
- Ideal for sinus lifts
- Self-tapping claw

Dental implant range 8 - Family: Baby 8

Diameter (mm) \ Length (mm)	Implant Ø4 mm	Implant Ø5 mm	Preview
	6 mm	XS406	



### Technical pattern

Øem: Emergence diameter  
L: Length



Delivered with a cover screw

### Indication



### Colour code

● Ø4 ● Ø5

## Specific instrumentation for Baby 8

Product name	Product code	Preview
Complete Baby 8 surgical mini-kit	A-TF001	
Baby 8 stainless steel surgical box	A-COF005	
Pointer drill with external irrigation L = 4 mm	A-FPT310	
Baby 8 stop drill No. 1 with external irrigation L = 6 mm	A-FBC100	
Baby 8 stop drill No. 2 with external irrigation L = 6 mm	A-FBC200	
Baby 8 stop drill No. 3 with external irrigation L = 6 mm	A-FBC300	
Baby 8 Stop drill No. 4 with external irrigation L = 6 mm	A-FBC400	
Baby 8 Stop drill No. 5 with external irrigation L = 6 mm	A-FBC500	
Short SwissClip screw tool for contra-angle Range 8	A-MCA230	
Short hexagonal screwdriver - L = 10.5 mm	A-CHC216	

## Prosthetic solutions for Baby 8

### Tips for use

The stages of healing and impression taking and all the prosthetic solutions for Baby 8 implants are identical to those for the other implants in the 8 range.





# Instrumentation & Accessories

8 Connection / M Connection





# INSTRUMENTATION & ACCESSORIES



## Surgical kit

All the essential elements for your implant surgery practice are gathered in the surgical kit depending on the system you have chosen: M, 8 or infinity.

### Ergonomic

A compact and complete kit design.

### Easy-to-use

Components available in different sizes to suit all clinical cases.

### Safety

Easy to clean and steam sterilisable.



- 2 Pointer drill
- 3 Stop drill No. 1  
Choose drill depending on implant length
- 4 Drill No. 2 intermediate
- 5 Drilling sequence according to the diameter of the implant to be fitted
- 6 Screw taps

7 Short and long screw tools for torque wrench

8 Short and long screw tools for contra-angle

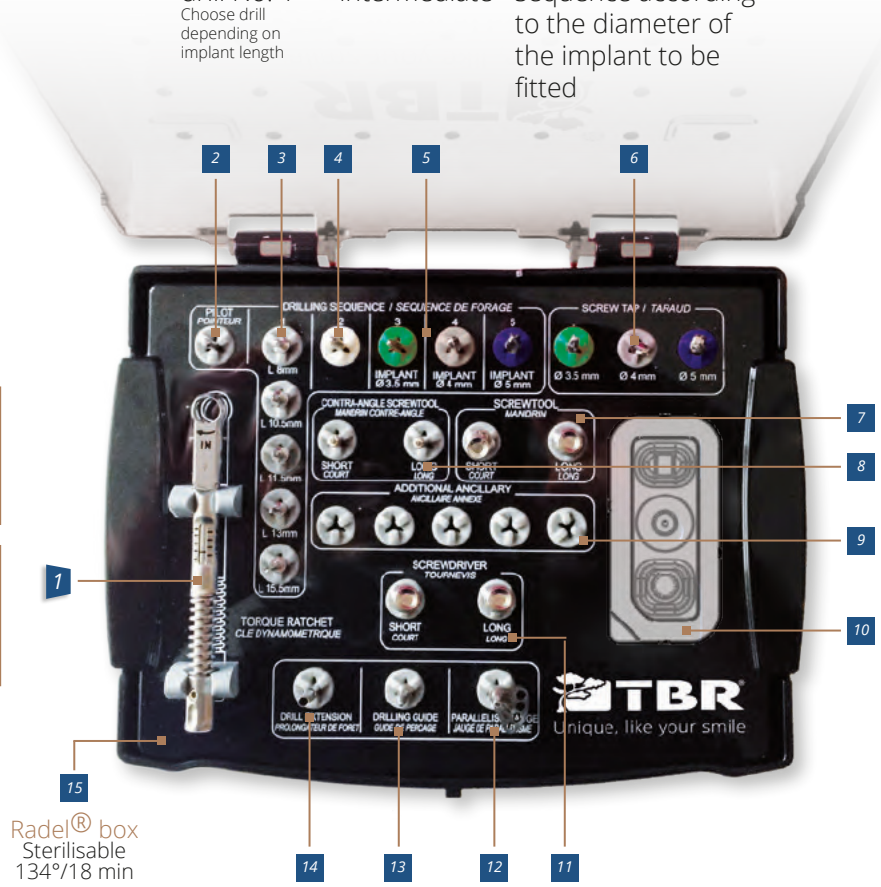
9 Empty spaces for additional ancillary parts

10 Location to stabilise the internal blister

11 Short and long hexagonal screwdrivers

7 Torque wrench

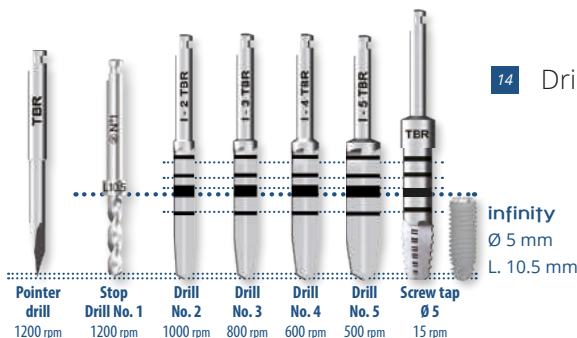
Dual function



Radel® box  
Sterilisable  
134°/18 min

Tips for use

The TBR implants are inserted following a unique and simple drilling protocol, see example opposite.



M Ref. A-TCP008 - M implants

8 Ref. A-TCP006 - 8 implants

8 Ref. A-TCP009 - infinity implants



# Removable stop drill kit

In addition to your surgical kit for implants with octagonal or Morse taper connections, you now have a box with 4 drills and 20 removable stops.

## Reliable drilling sequence

The stop prevents the drill from reaching the wrong depth.

## Friction retention system

The specific drills fit the stops simply by clipping.

## Safety

Easy to clean and steam sterilisable.



1 Laser marking of the implant range

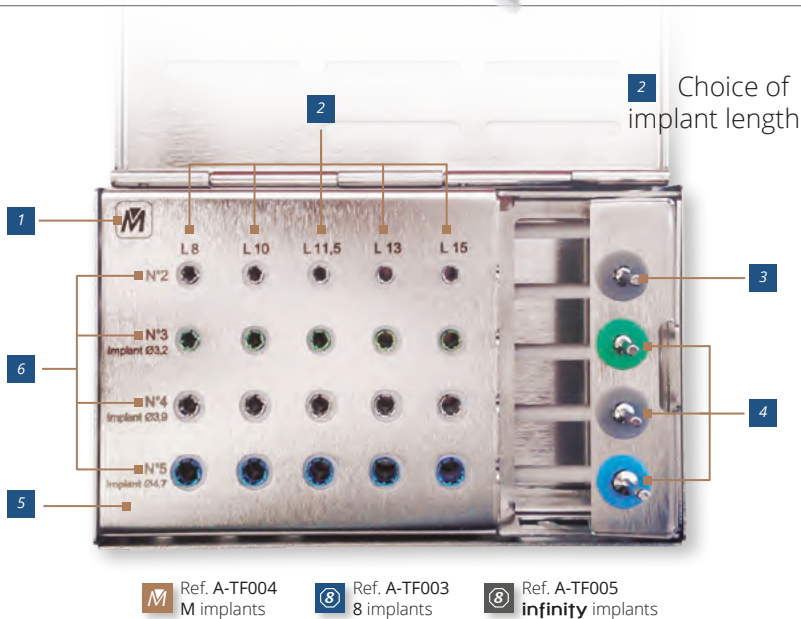
2 Choice of implant length

3 Drill No. 2 intermediate

6 Sequence of removable stops to use

4 Drilling sequence according to the diameter of the implant to be fitted

5 Surgical stainless steel box  
Sterilisable  
134°/18 min



Ref. A-TF004  
M implants

Ref. A-TF003  
8 implants

Ref. A-TF005  
infinity implants









## Refill for removable stop drill kit

Product name	Kit	Kit	Kit	Product code	Preview
Removable stop drill No. 2 - M	✓			A-FMB200	
Removable stop drill No. 3 - M	✓			A-FMB300	
Removable stop drill No. 4 - M	✓			A-FMB400	
Removable stop drill No. 5 - M	✓			A-FMB500	
Removable stop drill No. 2 - 8		✓		A-FCB200	
Removable stop drill No. 3 - 8		✓		A-FCB300	
Removable stop drill No. 4 - 8		✓		A-FCB400	
Removable stop drill No. 5 - 8		✓		A-FCB500	
Removable stop drill No. 2 - infinity			✓	A-FIB200	
Removable stop drill No. 3 - infinity			✓	A-FIB300	
Removable stop drill No. 4 - infinity			✓	A-FIB400	
Removable stop drill No. 5 - infinity			✓	A-FIB500	
Pack of removable stops for drill No. 2 - 8		✓	✓	A-PCB200	
Pack of removable stops for drill No. 3 - 8		✓	✓	A-PCB300	
Pack of removable stops for drill No. 4 - 8		✓	✓	A-PCB400	
Pack of removable stops for drill No. 5 - 8		✓	✓	A-PCB500	
Pack of removable stops for drill No. 2 - M	✓			A-PMB200	
Pack of removable stops for drill No. 3 - M	✓			A-PMB300	
Pack of removable stops for drill No. 4 - M	✓			A-PMB400	
Pack of removable stops for drill No. 5 - M	✓			A-PMB500	



# INSTRUMENTATION & ACCESSORIES

## ■ Surgical instrumentation

Product name	Kit 	Kit 	Kit infinity	Product code	Preview
Complete surgical kit - M range	✓			A-TCP008	
Radel surgical box - M range	✓			A-COF006	
Complete surgical kit - 8 range		✓		A-TCP006	
Radel surgical box - 8 range		✓		A-COF004-8	
Complete surgical kit - Infinity range			✓	A-TCP009	
Radel surgical box - Infinity range			✓	A-COF004-I	
Pointer drill with external irrigation L = 4 mm	✓	✓	✓	A-FPT310	
Stop drill No. 1 with external irrigation Range 8 & M - L = 8 mm	✓	✓	✓	A-FBX080	
Stop drill No. 1 with external irrigation Range M - L = 10 mm	✓			A-FBX100	
Stop drill No. 1 with external irrigation Range 8 - L = 10.5 mm		✓	✓	A-FBX105	
Stop drill No. 1 with external irrigation Range 8 & M - L = 11.5 mm	✓	✓	✓	A-FBX115	
Stop drill No. 1 with external irrigation Range 8 & M - L = 13 mm	✓	✓	✓	A-FBX130	
Stop drill No. 1 with external irrigation Range M - L = 15 mm	✓			A-FBX150	
Stop drill No. 1 with external irrigation Range 8 - L = 15.5 mm		✓	✓	A-FBX155	
Conical drill No. 2 with external irrigation Range 8 Point = 0.6 mm		✓		A-FCX200	
Conical drill No. 3 with external irrigation Range 8 Point = 0.6 mm		✓		A-FCX300	
Conical drill No. 4 with external irrigation Range 8 Point = 0.7 mm		✓		A-FCX400	
Conical drill No. 5 with external irrigation Range 8 Point = 0.9 mm		✓		A-FCX500	
Conical drill No. 2 with external irrigation Infinity Range Point = 0.6 mm			✓	A-FIX200	
Conical drill No. 3 with external irrigation Infinity Range Point = 0.6 mm			✓	A-FIX300	
Conical drill No. 4 with external irrigation Infinity Range Point = 0.7 mm			✓	A-FIX400	
Conical drill No. 5 with external irrigation Infinity Range Point = 0.9 mm			✓	A-FIX500	
Conical drill No. 2 with external irrigation M Range Point = 0.6 mm	✓			A-FMX200	
Conical drill No. 3 with external irrigation M Range Point = 0.6 mm	✓			A-FMX300	
Conical drill No. 4 with external irrigation M Range Point = 0.7 mm	✓			A-FMX400	
Conical drill No. 5 with external irrigation M Range Point = 0.9 mm	✓			A-FMX500	
Contra-angle screw tap 8 range Ø3.5		✓		A-TAR306	
Contra-angle screw tap 8 range Ø4		✓		A-TAR406	
Contra-angle screw tap 8 range		✓		A-TAR506	
SwissClip screw tap M range Ø3.2	✓			A-TAR303	
SwissClip screw tap M range Ø3.9	✓			A-TAR403	
SwissClip screw tap M range Ø4.7	✓			A-TAR503	
Contra-angle screw tap M range Ø3.2				A-TAR304	
Contra-angle screw tap M range Ø3.9				A-TAR404	
Contra-angle screw tap M range Ø4.7				A-TAR504	



■ Surgical instrumentation

Product name	Kit M	Kit 8	Kit infinity	Product code	Preview
Contra-angle screw tap range 8 & infinity Ø3.5			✓	A-TAR305	
Contra-angle screw tap range 8 & infinity Ø4			✓	A-TAR405	
Contra-angle screw tap range 8 & infinity Ø5			✓	A-TAR505	
Torque wrench	✓	✓	✓	A-CD045	
Square head adaptor for torque wrench				A-MCE070	
SwissClip short screw tool for contra-angle - M Range	✓			A-MCA222	
SwissClip long screw tool for contra-angle - M Range	✓			A-MCA322	
SwissClip short screw tool for ratchet wrench - M Range	✓			A-MCC159	
SwissClip long screw tool for ratchet wrench - M Range	✓			A-MCC254	
SwissClip short screw tool/screwdriver for contra-angle - 8 range		✓	✓	A-MCA230	
SwissClip long screw tool/screwdriver for contra-angle - 8 range		✓	✓	A-MCA325	
SwissClip short screw tool/screwdriver for ratchet wrench - 8 range		✓	✓	A-MCC163	
SwissClip long screw tool/screwdriver for ratchet wrench - 8 range		✓	✓	A-MCC258	
Drill extension	✓	✓	✓	A-PF661	
Drilling guide	✓	✓	✓	A-PER210	
Parallelism gauge	✓	✓	✓	A-JAU355	
Short hexagonal screwdriver - L = 10.5 mm	✓			A-CHC216	
Medium hexagonal screwdriver - L = 14.75 mm				A-CHM265	
Long hexagonal screwdriver - L = 19 mm	✓			A-CHL301	
Countersink for Ø3.5 / Ø3.2 implants				A-ALE300	
Countersink for Ø4 / Ø3.9 implants				A-ALE400	
Countersink for Ø5 / Ø4.7 implants				A-ALE500	
Circular surgical knife for Ø3.5 / Ø3.2 implants				A-BC350	
Circular surgical knife for Ø4 / Ø3.9 implants				A-BC400	
Circular surgical knife for Ø5 / Ø4.7 implants				A-BC500	
Circular surgical knife for Ø4.4 1 stage implants				A-BC450	
Circular surgical knife for Ø6 1 stage implants				A-BC600	
Trephine Ø inner = 2.5 mm - Ø outer 3.5 mm				A-TRE250	
Trephine Ø inner = 3.7 mm - Ø outer 4.7 mm				A-TRE370	
Trephine Ø inner = 4.2 mm - Ø outer 5.2 mm				A-TRE420	
Trephine Ø inner = 5.2 mm - Ø outer 6.2 mm				A-TRE520	
SwissClip ring - 8 range (x6)				A-MBP006	
SwissClip ring - M range (x6)				A-MBP007	
SwissClip ring - Infinity range (x6)				A-MBP008	
X-ray template for implants				A-TS600	



## Prosthetic kit

All the essential elements for your practice of implant-supported prosthesis are gathered in the M and 8 prosthetic kits.

### Ergonomic

New design for a compact and complete kit.

### Easy-to-use

Components available in different sizes to suit all clinical cases.

### Safety

Easy to clean and steam sterilisable.



Hexagonal point

2 Short manual screwdriver

3 Long manual screwdriver

4 Short tip for contra-angle

5 Long tip for contra-angle



Cruciform point

6 Short screw tool for multi-unit abutment

7 Long screw tool for multi-unit abutment

1 Torque wrench

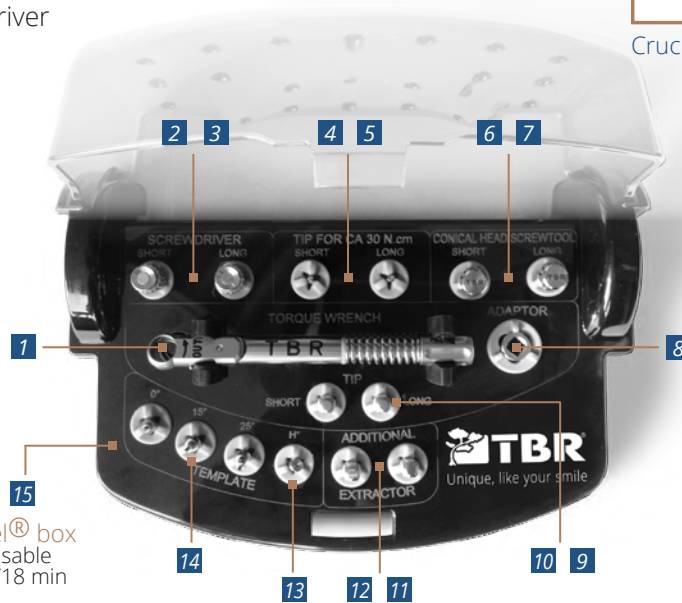
Dual function



Ratchet wrench position (symbol ∞)



Torque wrench position (10 to 45 N.cm)



8 Torque wrench adaptor (can be connected with square head tips)

9 Short tip for torque wrench

10 Long tip for torque wrench

Radel® box  
Sterilisable  
134°/18 min

14 Angulation kit



Tips for use

The angulation kit makes it easy to select the appropriate angulation for the clinical case requiring treatment.

13 Shoulder height selector



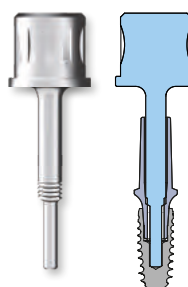
Tips for use

The shoulder height selector measures the available gingiva.

**M** For M abutment:

11 Short abutment extractor  
For M abutment with shoulder < or = 0.7 mm

12 Long abutment extractor  
For Z1-M and M abutment with shoulder > or = 1.5 mm



Maintenance

The abutment extractors are needed to disable the Morse taper between implant and prosthetic abutment.



# infinity Connect Baby 8



# M Baby M



## Main screws sold per unit and tightening torque

Product name	Range	Product code	Preview
Screw extraction kit Range 8 - 4 elements	M	A-KEV600	
	8	A-KEV800	

### Lightbulb Maintenance

For any other screw product code request, please contact us.

Product name	Range	Tightening torque	Product code	Preview
20°/30° Multi-unit abutment main screw	M 8	30 N.cm	VIM045	
20°/30° Multi-unit abutment secondary screw	M 8	30 N.cm	VIMC045	
Standard abutment screw	8	30 N.cm	VIM052	
Narrow abutment screw	8	30 N.cm	VIM053	
Z1-M multi-unit abutment screw	M	30 N.cm	HO-VIP034	
Short abutment screw Hg < or = 0.7 mm	M	30 N.cm	VIM051	
Long abutment screw Hg = 1.5/3/5 mm / Z1-M abutments	M	30 N.cm	VIM064	
Laboratory screw L = 21.1 mm	8	Manual / 15 N.cm	VTD185	
Transfer screw L = 15.5 mm	8	Manual / 15 N.cm	VTI155	
Laboratory screw L = 20.6 mm	M	Manual / 15 N.cm	VTD186	
Transfer screw L = 15.7 mm	M	Manual / 15 N.cm	VTI157	

## Prosthetic instrumentation

Product name	Kit M	Kit 8	Product code	Preview
Complete prosthetic kit - M range	✓	-	A-TP003	
Radel prosthetic box - M range	✓	-	A-COF007	
Complete prosthetic kit - 8 range	-	✓	A-TP002	
Radel prosthetic box - 8 range	-	✓	A-COF002	
Short hexagonal screwdriver - L = 10.5 mm	✓	✓	A-CHC216	
Medium hexagonal screwdriver - L = 14.75 mm	-	-	A-CHM265	
Long hexagonal screwdriver - L = 19 mm	✓	✓	A-CHL301	
Short hexagonal tip for contra-angle	✓	✓	ET 600	
Long hexagonal tip for contra-angle	✓	✓	ET 700	
Short screw tool for multi-unit abutment	✓	✓	A-MPC103	
Long screw tool for multi-unit abutment	✓	✓	A-MPC198	
Torque wrench	✓	✓	A-CD045	
Square head adaptor for torque wrench	-	-	A-MCE070	
Adaptor for contra-angle screwdriver compatible with all brands	-	-	A-MAC070	
Short hexagonal tip for torque wrench	-	-	A-ECD007	
Long hexagonal tip for torque wrench	-	-	A-ECD006	
SwissClip angulation kit - M range	✓	-	KP202	
SwissClip angulation kit - 8 range	-	✓	KP201	
Shoulder height selector - M range	✓	-	M-KHE500	
Shoulder height selector - 8 range	-	✓	O-KHE500	
Locator@ screw tool	-	-	A-MEL100	
Short hexagonal screw tool	✓	✓	A-ME007	
Long hexagonal screw tool	✓	✓	A-ME006	
Long extractor screw tool for abutment For Z1-M abutment with shoulder > 1.5 mm	✓	-	A-EXT240	
Short extractor screw tool for abutment For M abutment with shoulder < or = 0.7 mm	✓	-	A-EXT230	



Unique, like your smile

✓ **Aesthetic solutions\* :**

Lumineers® thin veneers

✓ **Implant solutions :**

BL implants systems

Z1® implant systems

✓ **Equipment solutions\* :**

NSK® Surgical Motor [MD Class IIa - Manufacturer Nakanishi Inc.]

Perioptix® Optical Systems [MD Class I and custom-made - Manufacturer DenMat LLC]

SleeperOne® Electronic Anaesthetic Injection [MD Class IIa - Manufacturer Dental HiTec SARL]

Sapphire® Curing Light [MD Class IIa - Manufacturer DenMat LLC.]

Carestream® Imaging Solutions [MD Class I & IIa - Manufacturer Carestream Health Inc.]

NV PRO3® Laser [DM de classe IIb - Manufacturer DenMat LLC.]

\* Availability according to country.



**30** years  
**Quality**  
**Innovation**  
**Made in**  
**France**  
**International**  
**Presence**

## The TBR<sup>®</sup> team Unique, like your smile.

### **A multidisciplinary manufacturer**

TBR is an **international company** with **headquarters based in France**. It has **specialised** in the design, manufacture and marketing of unique dental implant solutions for over 30 years:

- ✓ Aesthetic solutions
- ✓ Implant solutions
- ✓ Equipment solutions

### **Your partner of choice**

We aim to become an **irreplaceable partner** for dental professionals around the world. We share the same ambitions - to offer patients the best possible functional and aesthetic restorations - and are here to support your services with high quality products.

### **Authentic products**

We aim to help you meet patient expectations with our **authentic products and technologies**. We are also keen to help you **communicate to patients** in order to grow your practice.

TBR : Titanium Biointegrated Root

The bonsai tree has been chosen to represent the TBR Group because it is the perfect symbol of our ambitions for our products: endurance, longevity and resistance. Its roots have the vital function of ensuring its health and a long lifetime, mirroring what we aim for our dental implants to provide.




# Ready to start?


Thousands of dentists around the world choose the unique TBR implants because they want the best treatment available for their patients.


**Are you ready to offer this unique solution?**



Unique, like your smile

 GROUPE TBR | 24, impasse René Couzinet  
31500 Toulouse – France

 +33 (0) 5 62 16 71 00

 [contact@tbr.dental](mailto:contact@tbr.dental)



**Find us online**  
**[www.tbr.dental](http://www.tbr.dental)**

The products mentioned in this document are medical devices intended for aesthetic or functional smile rehabilitation, by authorized health professionals. These medical devices are regulated health products that, under this regulation, bear the CE marking. Read the instructions carefully before using the products. All the essential information for correct use of these devices is available from SUDIMPLANT SAS (TBR Group).